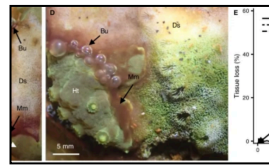


Announcement

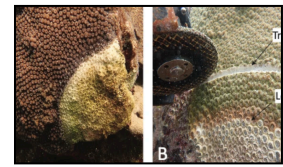
AS OF JUNE 9, SIGNIFICANT HEAT STRESS (ALERT LEVEL 1 AND ABOVE) HAS NOT BEEN OBSERVED EXCEPT FOR A FEW STRETCHES ALONG THE WESTERN CARIBBEAN COAST AND IS NOT PREDICTED TO IMPACT THE MAJORITY OF THE CARIBBEAN REGION IN THE COMING MONTHS.



REPORT CORAL BLEACHING OBSERVATIONS



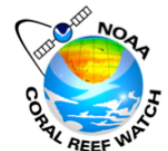
BREAKDOWN OF MICROBIAL NETWORKS LINKS NUTRIENT STRESS AND REEF CORAL DISEASE



FREQUENT CORAL DISEASE INTERVENTIONS REDUCES TISSUE LOSS

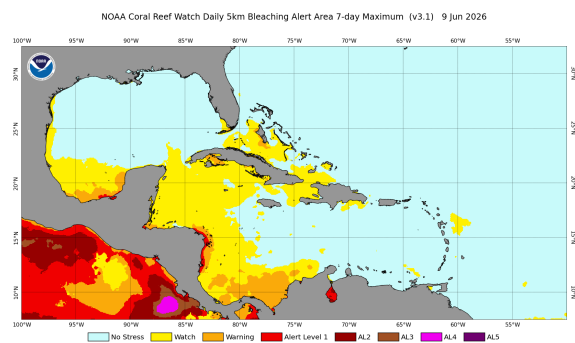


CARIBBEAN CORAL REEF WATCH



Notable Observations (As of June 9)

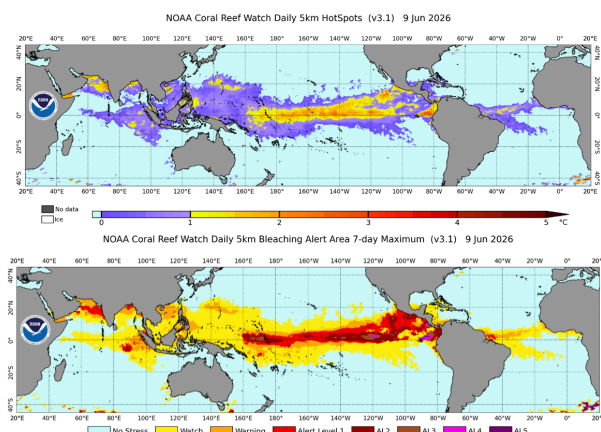
- ▶ The majority of the waters in the western and northern Caribbean are experiencing Bleaching Watch and Warning level conditions, with a few stretches of the western Caribbean coast exposed to Alert Level 1 conditions.
- ▶ ENSO Alert System Status: **El Niño Watch!** El Niño is likely to emerge soon (82% chance in May-July 2026) and continue through Northern Hemisphere winter 2026-27 (96% chance in December 2026-February 2027) [Read more...](#)



[Click here to track current conditions](#)

Current Global Conditions (As of June 9)

- ▶ The most extreme instantaneous heat stress (Hotspot values of 1°C or higher), is active across the equatorial Pacific Ocean, and the northwestern Indian Ocean.
- ▶ Alert Levels 1-5 heat stress are present in the following regions (based on NOAA CRW Regional Virtual Stations): Colombia Atlantic, Nicaragua, 100 % stations in Eastern Pacific, Northern Line Is., Howland and Baker, ~ 36% in Micronesia, Southern Vietnam, ~ 35% of other Southeast Asia stations, ~ 22% in Coral Triangle, ~ 16% in the middle east, and ~ 30% in South Asia.



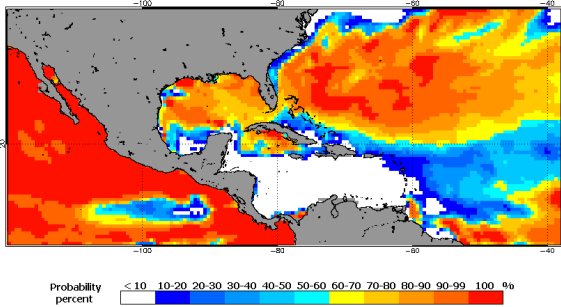
Alert Level Guide

Stress Level	Interpretation
No Stress	No Bleaching
Watch	
Warning	Risk of Possible Bleaching
Alert Level 1	Risk of Reef-Wide Bleaching
Alert Level 2	Risk of Reef-Wide Bleaching with Mortality of Heat-Sensitive Corals
Alert Level 3	Risk of Multi-Species Mortality
Alert Level 4	Risk of Severe, Multi-Species Mortality (> 50% of corals)
Alert Level 5	Risk of Near Complete Mortality (> 80% of corals)

Caribbean Outlook (June-September 2026)

- Based on the 4-Month Probabilistic Outlook of June 9, heat stress is not predicted to reach Alert Level 1 in most of the Caribbean basin. Only the northern reefs of The Bahamas are predicted, with relatively high probabilities, to reach/exceed Alert Level 1.

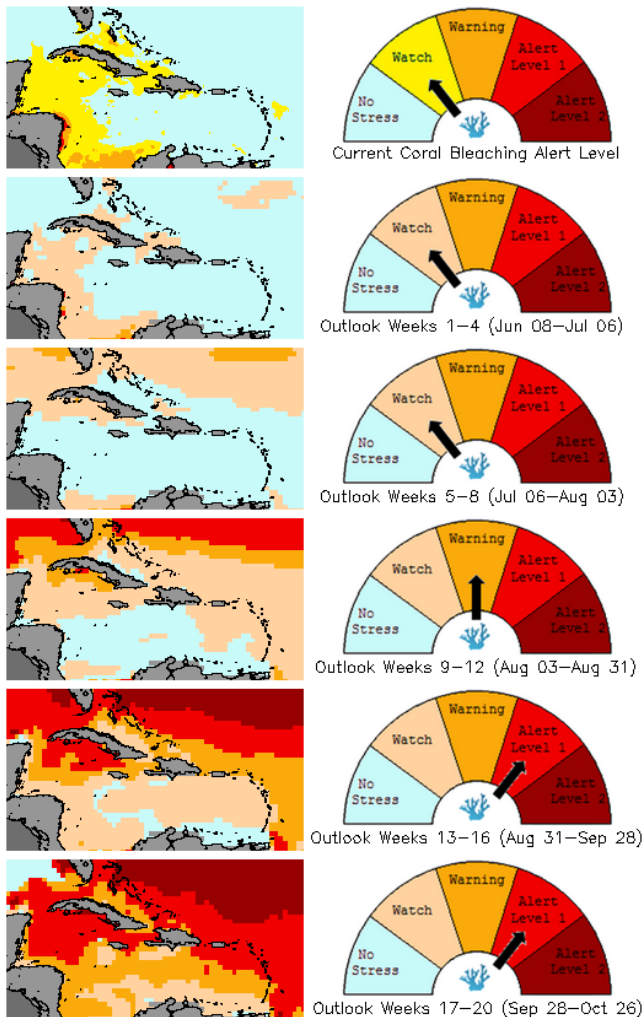
2026 Jun 9 NOAA Coral Bleaching Heat Stress Probabilities (Alert 1 & 2) for Jun-Sep
Experimental, v5.0, CFSv2-based, 28 to 112 Ensemble Members



[Click here to track the 4-month probabilistic bleaching outlook](#)

Bleaching Alert Area and Outlook

Caribbean Satellite Bleaching Alert Area and Outlook
2026-06-09

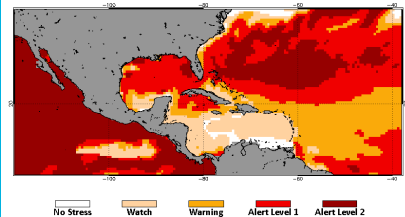


Caribbean Bleaching Outlook

As of 9 June, 2026, NOAA CRW's 4-Month Coral Bleaching Outlook (60% probability) predicts Bleaching Alert level 1 conditions to begin affecting northern reefs of The Bahamas in August and then increase to Alert level 2 conditions in September. Alert level 1 conditions are predicted to spread south impacting Turks and Caicos, the Cayman Islands, Jamaica, the Leeward Islands, Barbados, and Trinidad & Tobago in late September and October.

[View all 5-km NOAA CRW Regional Virtual Stations](#)

2026 Jun 9 NOAA R05 Probability Coral Bleaching Heat Stress for Jun-Sep 2026
Experimental, v5.0, CFSv2-based, 28 to 112 Ensemble Members



[4-month Coral Bleaching Outlook \(60% probability\)](#)

[4-month Coral Bleaching Outlook \(90% probability\)](#)

[Click here for more information about the NOAA Coral Reef Watch methodology](#)

For more information contact:

Adrian Trotman
atrotman@cimh.edu.bb

Courtney Forde
cforde@cimh.edu.bb

Shontelle Stoute
sstoute@cimh.edu.bb