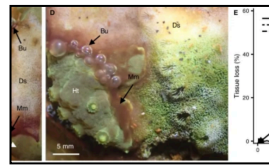


Announcement

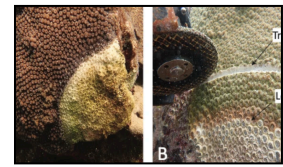
AS OF MAY 18, SIGNIFICANT HEAT STRESS (ALERT LEVEL 1 AND ABOVE) HAS NOT BEEN OBSERVED EXCEPT FOR A SMALL STRETCH ALONG THE WESTERN CARIBBEAN COAST AND IS NOT PREDICTED TO IMPACT THE MAJORITY OF THE CARIBBEAN REGION IN THE COMING MONTHS.



REPORT CORAL BLEACHING OBSERVATIONS



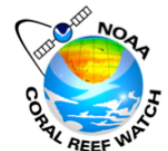
BREAKDOWN OF MICROBIAL NETWORKS LINKS NUTRIENT STRESS AND REEF CORAL DISEASE



FREQUENT CORAL DISEASE INTERVENTIONS REDUCES TISSUE LOSS

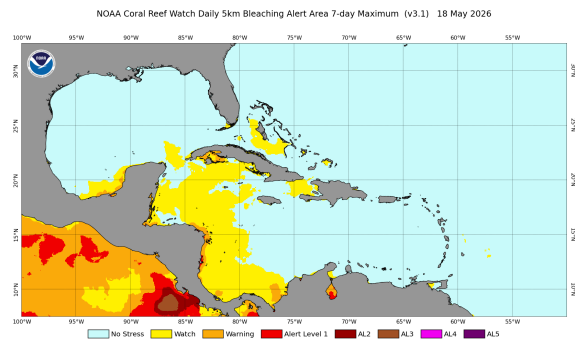


CARIBBEAN CORAL REEF WATCH



Notable Observations (As of May 18)

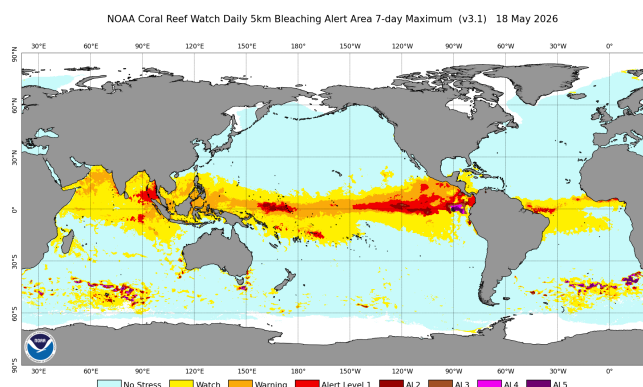
- ▶ The waters in the western Caribbean are experiencing Bleaching Watch and Warning level conditions, with a small stretch of the coast exposed to Alert Level 1 conditions. Additionally, central reefs of The Bahamas, are experiencing watch level conditions, and south Cuba is experiencing Watch to Warning level conditions.
- ▶ ENSO Alert System Status: **El Niño Watch!** El Niño is likely to emerge soon (82% chance in May-July 2026) and continue through Northern Hemisphere winter 2026-27 (96% chance in December 2026-February 2027) [Read more...](#)



[Click here to track current conditions](#)

Current Global Conditions (As of May 18)

- ▶ The most extreme accumulated heat stress (Alert Level 4 or higher, corresponding to Degree Heating Weeks [DHW] $\geq 16^{\circ}\text{C}$ -weeks), is active in the eastern equatorial Pacific Ocean.
- ▶ Alert Levels 1-5 heat stress are present in the following regions and at NOAA CRW Regional Virtual Stations: ~ 43% of Eastern Pacific stations, Samoas, Gilbert Islands (Kiribati), Nauru, ~ 35% of other Southeast Asia stations, ~ 17% of the Coral Triangle, and ~ 30% of South Asia.

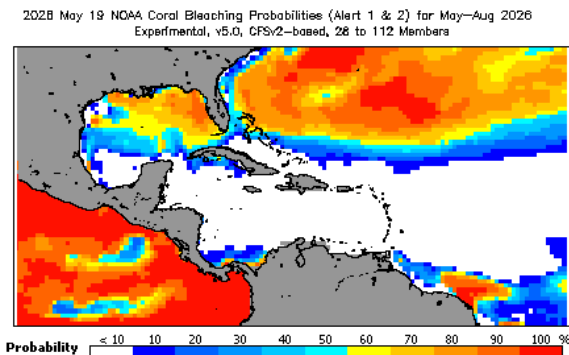


Alert Level Guide

Stress Level	Interpretation
No Stress	No Bleaching
Watch	
Warning	Risk of Possible Bleaching
Alert Level 1	Risk of Reef-Wide Bleaching
Alert Level 2	Risk of Reef-Wide Bleaching with Mortality of Heat-Sensitive Corals
Alert Level 3	Risk of Multi-Species Mortality
Alert Level 4	Risk of Severe, Multi-Species Mortality (> 50% of corals)
Alert Level 5	Risk of Near Complete Mortality (> 80% of corals)

Caribbean Outlook (May-August 2026)

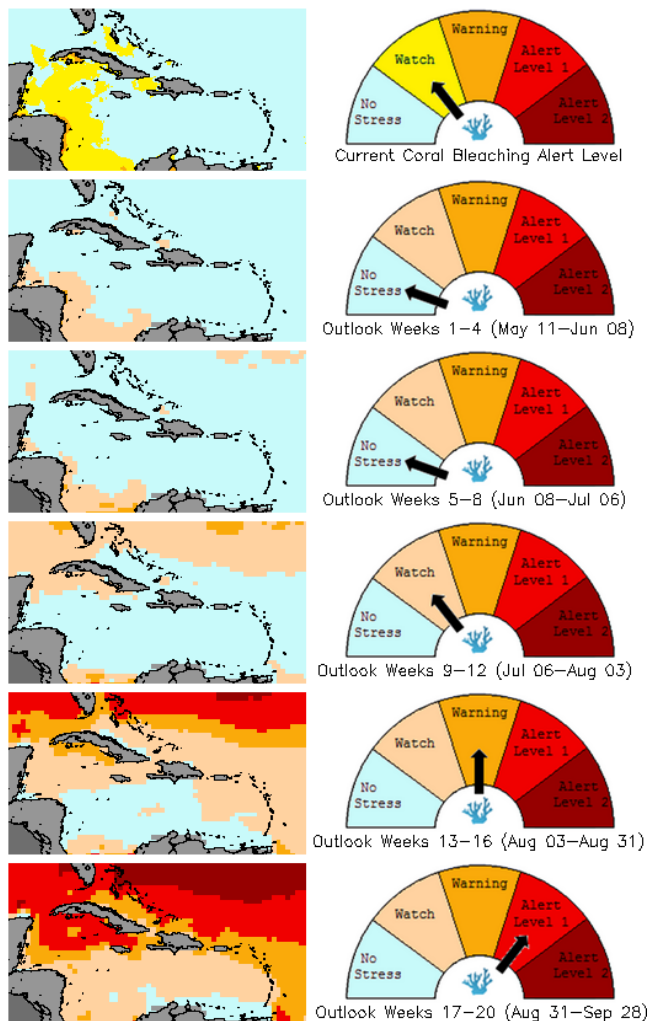
- Based on the 4-Month Probabilistic Outlook of May 19, heat stress is not predicted to reach Alert Level 1 in most of the Caribbean basin. Only the northern reefs of The Bahamas are predicted, with relatively high probabilities, to reach/exceed Alert Level 1.



[Click here to track the 4-month probabilistic bleaching outlook](#)

Bleaching Alert Area and Outlook

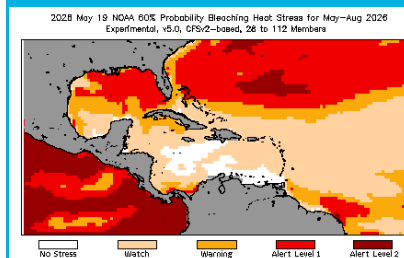
Caribbean Satellite Bleaching Alert Area and Outlook
2026-05-17



Caribbean Bleaching Outlook

As of 17 May, 2025, NOAA CRW's 4-Month Coral Bleaching Outlook (60% probability) predicts Bleaching Alert level 1 conditions to begin affecting northern reefs of The Bahamas in August, and expanding to affect the Turks and Caicos in September, while spreading south to Jamaica, the Cayman Islands, Cuba, and Hispaniola in the northwestern Caribbean, without affecting much of the remaining southern Caribbean region by the end of September.

[View all 5-km NOAA CRW Regional Virtual Stations](#)



[4-month Coral Bleaching Outlook \(60% probability\)](#)

[4-month Coral Bleaching Outlook \(90% probability\)](#)

[Click here for more information about the NOAA Coral Reef Watch methodology](#)

For more information contact:

Adrian Trotman
atrotman@cimh.edu.bb

Courtney Forde
cforde@cimh.edu.bb

Shontelle Stoute
sstoute@cimh.edu.bb