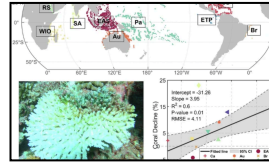


Announcement

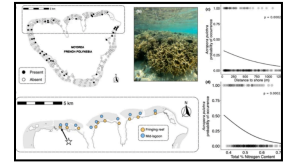
MOST OF THE SEVERE HEAT STRESS IN THE REGION HAS DISSIPATED. HOWEVER, THERE IS STILL SOME ACCUMULATED HEAT STRESS AT ISOLATED LOCATIONS.



REPORT CORAL BLEACHING OBSERVATIONS



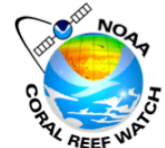
INEVITABLE GLOBAL CORAL REEF DECLINE UNDER CLIMATE CHANGE-INDUCED THERMAL STRESSES



GROWTH-PREDATION RISK TRADEOFFS CONSTRAIN THE LOCAL DISTRIBUTION OF A THICK-FORMING STAGHORN CORAL TO MARGINAL REEF HABITATS

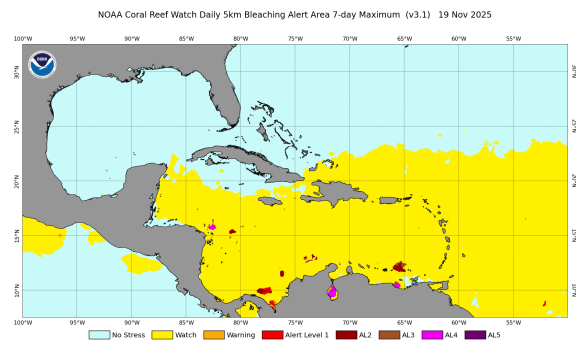


CARIBBEAN CORAL REEF WATCH



Notable Observations (As of Nov. 19)

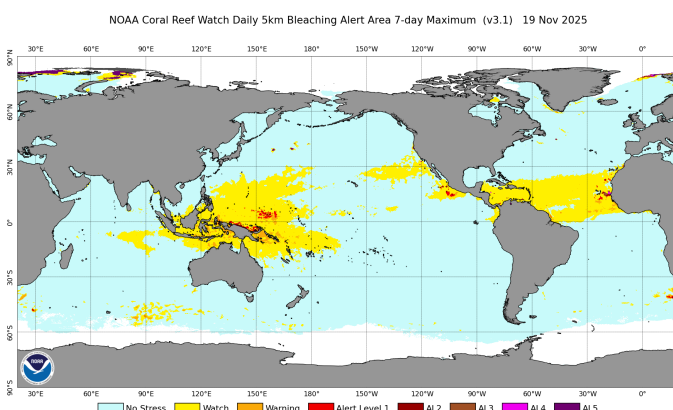
- Most of the severe heat stress in the Caribbean has dissipated as Northern Hemisphere winter approaches.
- The remaining severe heat stress with Alert Level 2 and higher, in the southern Caribbean including the Leeward Antilles, has dissipated over the past 7 days, but the impacts on the corals may continue.



[Click here to track current conditions](#)

Current Global Conditions (As of Nov. 19)

Globally, heat stress in the Northern Hemisphere is dissipating. The Bleaching Alert Area map above shows active heat stress where the DHW is currently accumulating (Warning and higher). Everywhere else DHW is dissipating, but corals may still experience lingering effects. Currently, Alert Levels 1-5 heat stress are present at the following NOAA CRW Regional Virtual Stations: ~12% of the Caribbean stations (Colombia Atlantic, Panama Atlantic East, and Nicaragua) and Papua New Guinea.



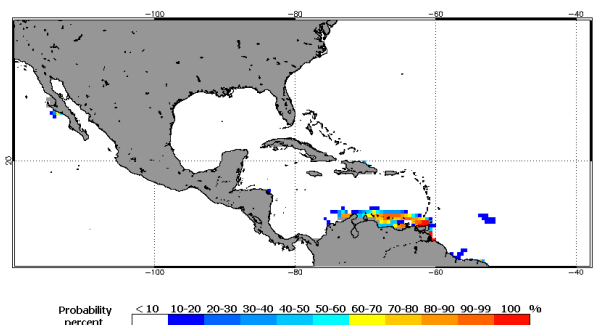
Alert Level Guide

Stress Level	Interpretation
No Stress	No Bleaching
Watch	
Warning	Risk of Possible Bleaching
Alert Level 1	Risk of Reef-Wide Bleaching
Alert Level 2	Risk of Reef-Wide Bleaching with Mortality of Heat-Sensitive Corals
Alert Level 3	Risk of Multi-Species Mortality
Alert Level 4	Risk of Severe, Multi-Species Mortality (> 50% of corals)
Alert Level 5	Risk of Near Complete Mortality (> 80% of corals)

Caribbean Outlook (November '25-February '26)

The 4-Month Probabilistic Outlook of November 18 predicts the heat stress in southern Caribbean basin to linger at Alert Level 2 for a few weeks before fully dissipating.

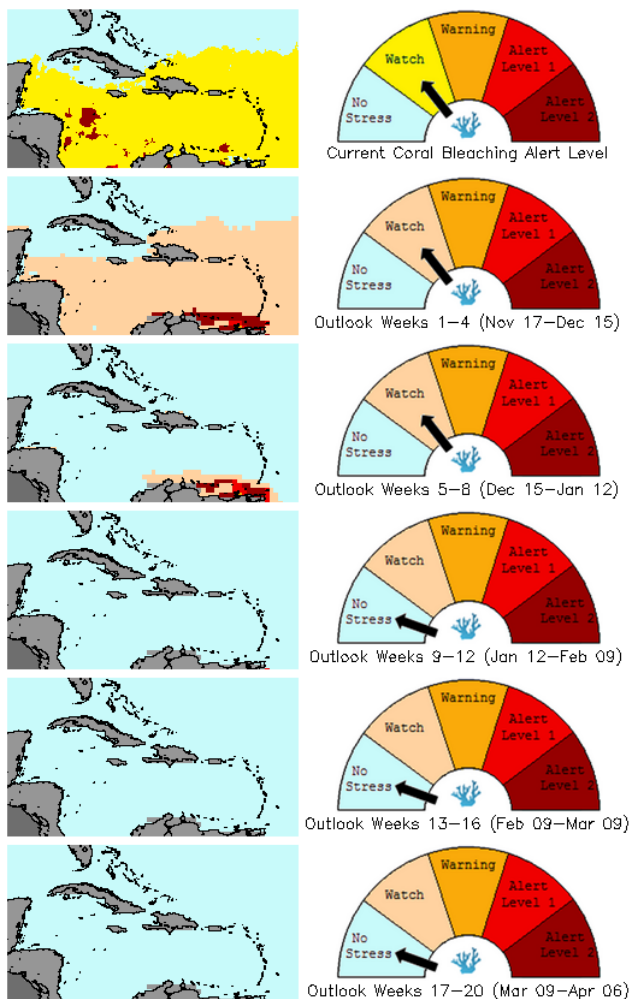
2025 Nov 18 NOAA Coral Bleaching Heat Stress Probabilities (Alert 2) for Nov–Feb
Experimental, v5.0, CFSv2–based, 28 to 112 Ensemble Members



[Click here to track the 4-month probabilistic bleaching outlook](#)

Bleaching Alert Area and Outlook

Caribbean Satellite Bleaching Alert Area and Outlook
2025–11–18

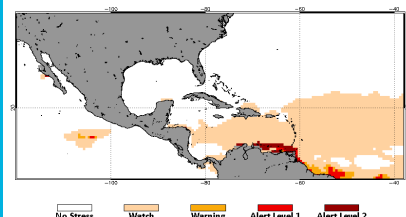


Caribbean Bleaching Outlook

As of 18 November, 2025, NOAA CRW's 4-Month Coral Bleaching Outlook (60% probability) indicates that Bleaching Alert-Level 2 conditions are forecasted to continue in the Southern Caribbean into December. All heat stress is forecasted to be gone by mid-January as Northern Hemisphere winter continues.

[View all 5-km NOAA CRW Regional Virtual Stations](#)

2025 Nov 18 NOAA 60% Probability Coral Bleaching Heat Stress for Nov–Feb 2026
Experimental, v5.0, CFSv2–based, 28 to 112 Ensemble Members



[4-month Coral Bleaching Outlook \(60% probability\)](#)

[4-month Coral Bleaching Outlook \(90% probability\)](#)

[Click here for more information about the NOAA Coral Reef Watch methodology](#)

For more information contact:

Adrian Trotman
atrotman@cimh.edu.bb

Courtney Forde
cforde@cimh.edu.bb

Shontelle Stoute
sstoute@cimh.edu.bb