

Announcement

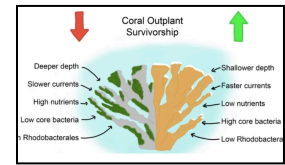
AS OF JULY 17, SIGNIFICANT HEAT STRESS (ALERT LEVEL 1 AND ABOVE) IS NOT PREDICTED TO IMPACT THE MAJORITY OF THE CARIBBEAN REGION DURING JULY TO SEPTEMBER.



REPORT CORAL BLEACHING OBSERVATIONS



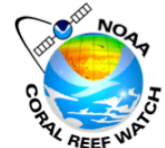
ELEVATED TEMPERATURE DECREASES STONY CORAL TISSUE LOSS DISEASE TRANSMISSION, WITH LITTLE EFFECT OF NUTRIENTS



REEF SITE AND HABITAT INFLUENCE EFFECTIVENESS OF ACROPORA PALMATA RESTORATION AND ITS MICROBIOME IN THE FLORIDA KEYS



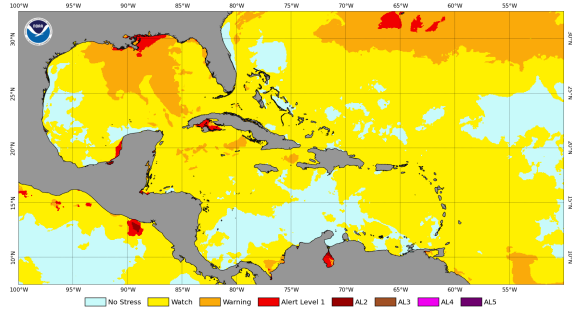
CARIBBEAN CORAL REEF WATCH



Notable Observations (As of July 17)

- Most of the waters in the Caribbean have now experienced Bleaching Watch level conditions, including Jamaica, Cayman Islands, Hispaniola, most of the Bahamas, Turks and Caicos, the Leeward Islands, the Windward Islands, Barbados, and Trinidad and Tobago.
- The southern Mesoamerican Reef along the coast of Honduras and Belize is now experiencing increased heat stress at Alert Level 1 and 2, but without spatial expansion from last month.
- A gradual increase in heat stress being observed throughout the region.

NOAA Coral Reef Watch Daily 5km Bleaching Alert Area 7-day Maximum (v3.1) 17 Jul 2025

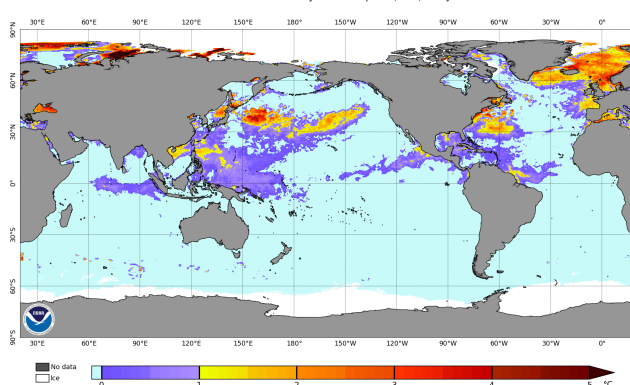


[Click here to track current conditions](#)

Current Global Conditions (As of July 17)

- Instantaneous/active heat stress greater than 1°C is primarily present in the western Atlantic off the east coast off the USA, and the mid latitudes of the Western and Central Pacific Ocean. Alert Levels 1-5 heat stress are present at the following NOAA CRW Regional Virtual Stations: Bermuda, Southwestern Cuba, Colombia Atlantic, El Salvador, ~40% of East Asia, and Northern and Central Philippines. Bleaching Warning heat stress present at ~ 16% of Caribbean stations, ~18% of Micronesia, ~30% of East Asia, and ~42% of Middle East.

NOAA Coral Reef Watch Daily 5km HotSpots (v3.1) 17 Jul 2025



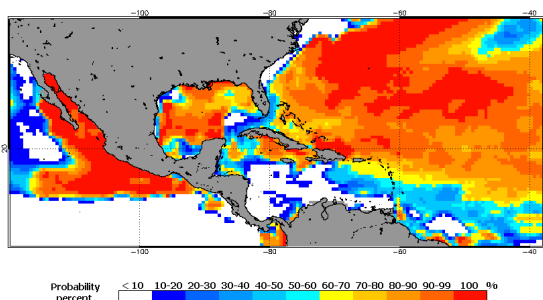
Alert Level Guide

Stress Level	Interpretation
No Stress	No Bleaching
Watch	
Warning	Risk of Possible Bleaching
Alert Level 1	Risk of Reef-Wide Bleaching
Alert Level 2	Risk of Reef-Wide Bleaching with Mortality of Heat-Sensitive Corals
Alert Level 3	Risk of Multi-Species Mortality
Alert Level 4	Risk of Severe, Multi-Species Mortality (> 50% of corals)
Alert Level 5	Risk of Near Complete Mortality (> 80% of corals)

Caribbean Outlook (July-October 2025)

- The 4-Month Probabilistic Outlook of July 8 does not predict heat stress to reach Alert Level 1 in most of the Caribbean basin. The regions predicted with relatively high probabilities, to reach/exceed Alert Level 1 are in the northern Bahamas, Turks and Caicos, southern Cuba, and northern coast of Hispaniola, Puerto Rico, and the Leeward Islands.

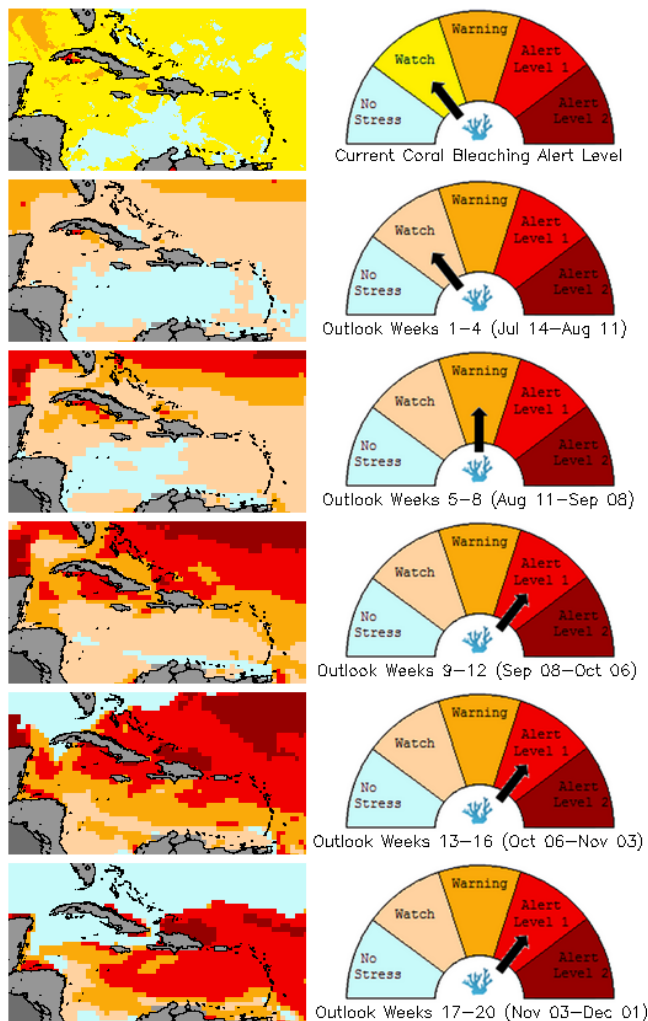
2025 Jul 15 NOAA Coral Bleaching Heat Stress Probabilities (Alert 1 & 2) for Jul-Oct
Experimental, v5.0, CFSv2-based, 28 to 112 Ensemble Members



[Click here to track the 4-month probabilistic bleaching outlook](#)

Bleaching Alert Area and Outlook

Caribbean Satellite Bleaching Alert Area and Outlook
2025-07-17

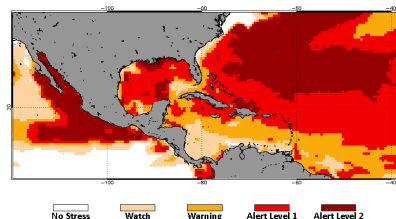


Caribbean Bleaching Outlook

As of 17 July, 2025, NOAA CRW's 4-Month Coral Bleaching Outlook (60% probability) indicates that Bleaching Alert-Level 1 conditions are forecasted to begin affecting the Bahamas, Turks and Caicos, Northern Hispaniola, Cuba, and Cayman Islands in September, with intensity increasing into October while expanding to affect Jamaica, Puerto Rico, and the Leeward Islands.

[View all 5-km NOAA CRW Regional Virtual Stations](#)

2025 Jul 15 NOAA 60% Probability Coral Bleaching Heat Stress for Jul-Oct 2025
Experimental, v5.0, CFSv2-based, 28 to 112 Ensemble Members



[4-month Coral Bleaching Outlook \(60% probability\)](#)

[4-month Coral Bleaching Outlook \(90% probability\)](#)

[Click here for more information about the NOAA Coral Reef Watch methodology](#)

For more information contact:

Adrian Trotman
atrotman@cimh.edu.bb

Courtney Forde
cforde@cimh.edu.bb

Shontelle Stoute
sstoute@cimh.edu.bb