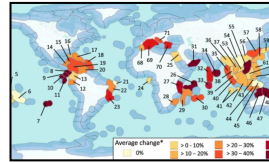


## Announcement

**THE MOST SEVERE HEAT STRESS IS CURRENTLY PREDICTED FOR SEPTEMBER AND OCTOBER 2024. TAKE NOTE OF THE NEW ALERT LEVELS AS CONDITIONS ABOVE ALERT LEVEL 2 ARE LIKELY.**



**REPORT CORAL BLEACHING OBSERVATIONS**



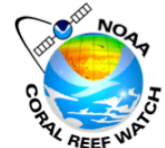
**GLOBAL IMPACTS OF MARINE HEATWAVES ON COASTAL FOUNDATION SPECIES**



**STONY CORAL TISSUE LOSS DISEASE IS SHIFTING THE ECOLOGICAL BALANCE OF CARIBBEAN REEFS**



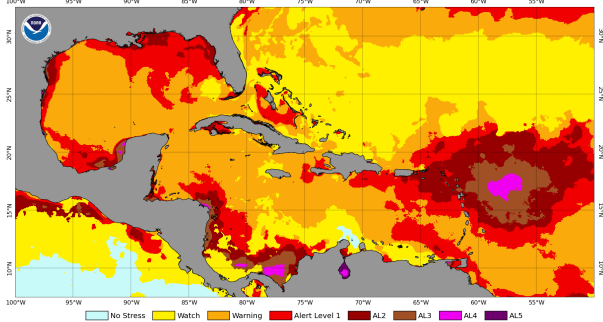
# CARIBBEAN CORAL REEF WATCH



## Notable Observations (As of Aug. 10)

- Bleaching Alert-level 3 and 4 conditions are present predominantly along Honduras and Nicaragua; in Amatique Bay (bordered by Guatemala and Belize); along a small area of the NW Yucatán Peninsula (Mexico); along the Panamanian and Colombian coasts; and in Lago de Maracaibo (Venezuela). A large swath of high heat stress (extending to Alert Level 4) is also present to the east of, and encompassing the Leeward Is. Bleaching Alert-level 2 is present in S. Belize, Nicaragua, Panama Atlantic E., Colombia Atlantic, SW, Cuba, SE. Puerto Rico, in the Leeward Is., the US Virgin Is., and the British Virgin Is. Bleaching Alert-level 1 persists in N., W., and S. Gulf of Mexico, S. Hispaniola, S. Puerto Rico, the Bahamas, Leeward Is., Barbados, and Trinidad and Tobago.

NOAA Coral Reef Watch Daily 5km Bleaching Alert Area 7-day Maximum (v3.1) 10 Aug 2024

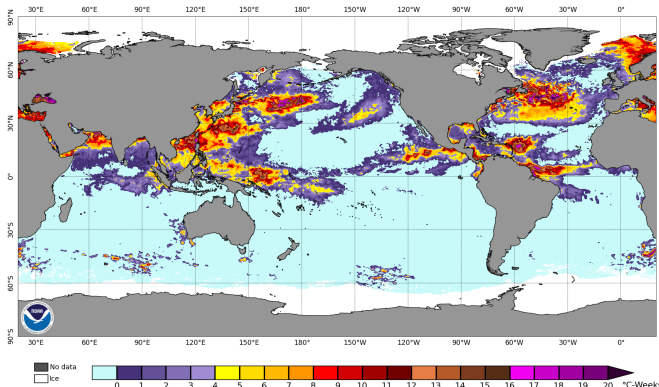


[Click here to track current conditions](#)

## Current Global Conditions (As of Aug. 10)

- The most extreme accumulated heat stress (Degree Heating Weeks [DHW]  $\geq 16^{\circ}\text{C}$ -weeks; Alert Level 4 or higher), is active in the west-central equatorial Atlantic Ocean. Alert Levels 1-5 heat stress are present at the following NOAA CRW Regional Virtual Stations: ~ 60% of stations within the wider Caribbean, including the Bahamas, Florida Keys, Veracruz (Mexico), Yucatán Peninsula, and Panama Pacific E., ~ 36% of Micronesia, ~ 22% of the Coral Triangle, all of East Asia stations, ~ 22% of other SE. Asia stations, ~ 53% of the Middle East, and ~10% of S. Asia.

NOAA Coral Reef Watch Daily 5km Degree Heating Weeks (v3.1) 10 Aug 2024



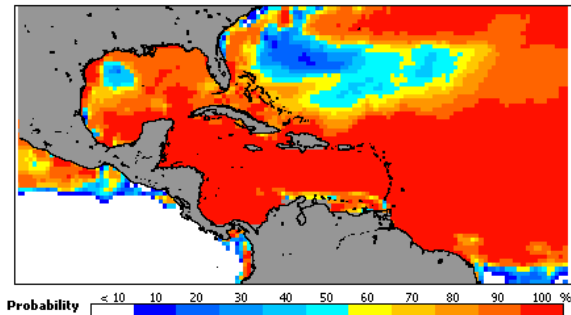
## Alert Level Guide

Stress Level	Interpretation
No Stress	No Bleaching
Watch	
Warning	Risk of Possible Bleaching
Alert Level 1	Risk of Reef-Wide Bleaching
Alert Level 2	Risk of Reef-Wide Bleaching with Mortality of Heat-Sensitive Corals
Alert Level 3	Risk of Multi-Species Mortality
Alert Level 4	Risk of Severe, Multi-Species Mortality (> 50% of corals)
Alert Level 5	Risk of Near Complete Mortality (> 80% of corals)

## Caribbean Outlook (August-September 2024)

- 4-Month Probabilistic Outlook of August 6 predicts, with a high probability, that heat stress will reach/exceed Alert Levels 1 & 2 throughout the entire Caribbean basin except the Leeward Antilles, and most of the Gulf of Mexico, the Bahamas and Turks and Caicos.

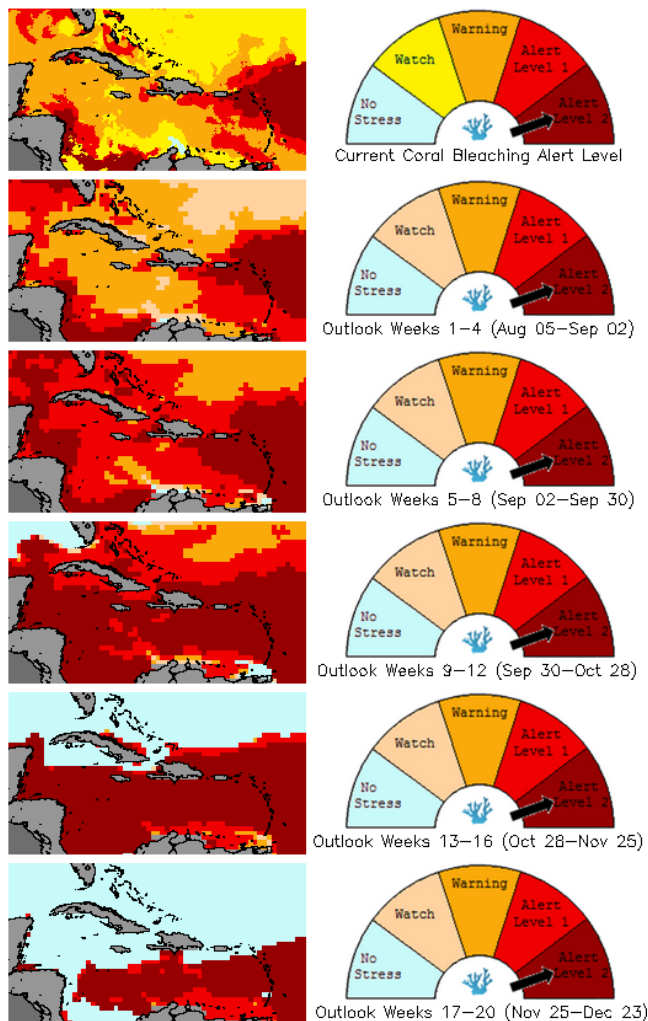
2024 Aug 6 NOAA Coral Bleaching Probabilities (Alert 1 & 2) for Aug–Nov 2024  
Experimental, v5.0, CFSv2-based, 28 to 112 Members



[Click here to track the 4-month probabilistic bleaching outlook](#)

## Bleaching Alert Area and Outlook

Caribbean Satellite Bleaching Alert Area and Outlook  
2024–08–10

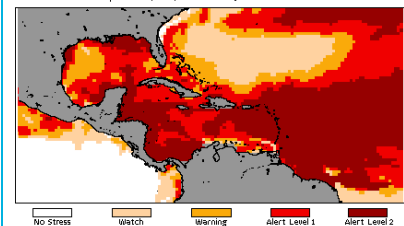


## Caribbean Bleaching Outlook

As of 6 August, 2024, NOAA CRW's 4-Month Coral Bleaching Outlook (90% probability) indicates that Bleaching Alert-level 2 and higher heat stress, already present in the SW. Caribbean and encompassing much of the Leeward Is., will expand further into other areas of the basin in the next month; will encompass most of the basin in 9–12 weeks' time; and remain until the end of the forecast period. NOTE: alerts are not uniform across the basin.

[View all 5-km NOAA CRW Regional Virtual Stations](#)

2024 Aug 6 NOAA 90% Probability Bleaching Heat Stress for Aug–Nov 2024  
Experimental, v5.0, CFSv2-based, 28 to 112 Members



[4-month Coral Bleaching Outlook \(90% probability\)](#)

[4-month Coral Bleaching Outlook \(60% probability\)](#)

[Click here for more information about the NOAA Coral Reef Watch methodology](#)

For more information contact:

Adrian Trotman  
atrotman@cimh.edu.bb

Courtney Forde  
cforde@cimh.edu.bb

Shontelle Stoute  
sstoute@cimh.edu.bb