

Announcement

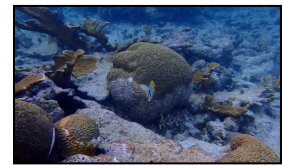
THE MOST SEVERE HEAT STRESS IS CURRENTLY PREDICTED TO BE PRESENT FOR SEPTEMBER AND OCTOBER 2024. TAKE NOTE OF THE NEW ALERT LEVELS AS CONDITIONS ABOVE ALERT LEVEL 2 ARE LIKELY.



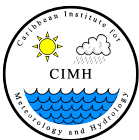
REPORT CORAL BLEACHING OBSERVATIONS



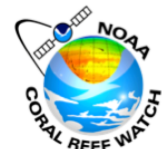
SEVERE HURRICANES BOOST INFLUX OF JUVENILES AND GENE FLOW IN A CORAL REEF SPONGE



STONY CORAL TISSUE LOSS DISEASE IS SHIFTING THE ECOLOGICAL BALANCE OF CARIBBEAN REEFS



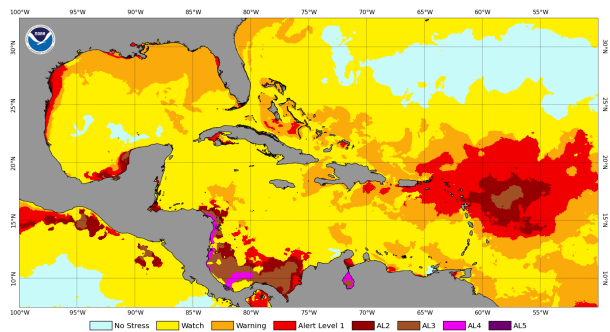
CARIBBEAN CORAL REEF WATCH



Notable Observations (As of July 16)

- Bleaching Alert-level 3 and 4 conditions are present in the SW Caribbean, predominantly along Honduras, Panama, Costa Rica, and Nicaragua; in Amatique Bay (bordered by Guatemala and Belize); and along a small area of the NW Yucatán Peninsula (Mexico). Bleaching Alert-level 2 is present along parts of the Yucatán Peninsula, S. Belize, and Guatemala, and in the Leeward Is. Bleaching Alert-level 1 persists in S. Hispaniola, SE Puerto Rico, the US Virgin Is., British Virgin Is., Leeward Is., Nearshore Venezuela, La Guajira (Colombia), and much of the Colombian coastline.

NOAA Coral Reef Watch Daily 5km Bleaching Alert Area 7-day Maximum (v3.1) 16 Jul 2024

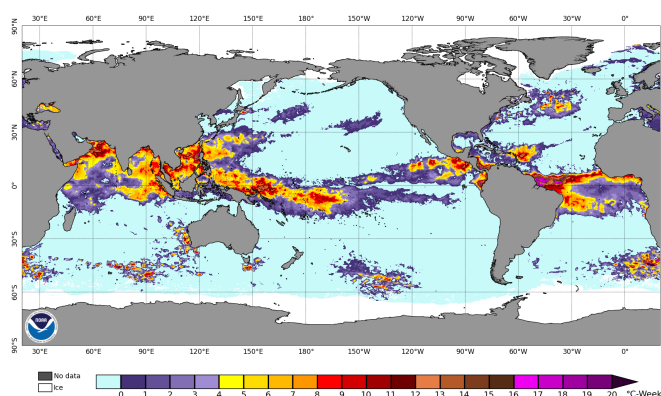


[Click here to track current conditions](#)

Current Global Conditions (As of July 16)

- The most extreme accumulated heat stress (Degree Heating Weeks [DHW] $\geq 16^{\circ}\text{C-weeks}$; Alert Level 4 or higher), is active in the west-central equatorial Atlantic Ocean. Alert Levels 1-5 heat stress are present at the following NOAA CRW Regional Virtual Stations: Veracruz (Mexico), Yucatán Peninsula, ~ 48% of Caribbean stations, ~ 29% of Eastern Pacific, W. FSM, Palau, Nauru, ~ 13% of the Coral Triangle, 80% of East Asia, ~17% of other SE. Asia stations, ~ 32% of the Middle East, and ~ 30% of S. Asia.

NOAA Coral Reef Watch Daily 5km Degree Heating Weeks (v3.1) 16 Jul 2024

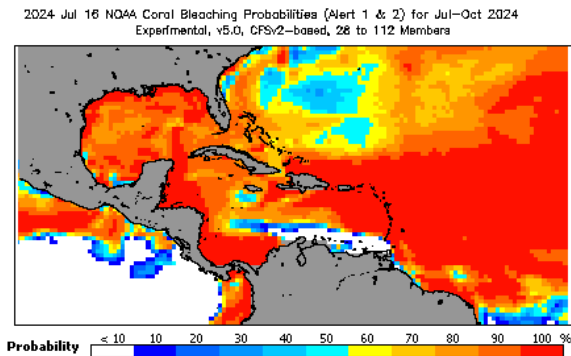


Alert Level Guide

Stress Level	Interpretation
No Stress	No Bleaching
Watch	
Warning	Risk of Possible Bleaching
Alert Level 1	Risk of Reef-Wide Bleaching
Alert Level 2	Risk of Reef-Wide Bleaching with Mortality of Heat-Sensitive Corals
Alert Level 3	Risk of Multi-Species Mortality
Alert Level 4	Risk of Severe, Multi-Species Mortality (> 50% of corals)
Alert Level 5	Risk of Near Complete Mortality (> 80% of corals)

Caribbean Outlook (July-October 2024)

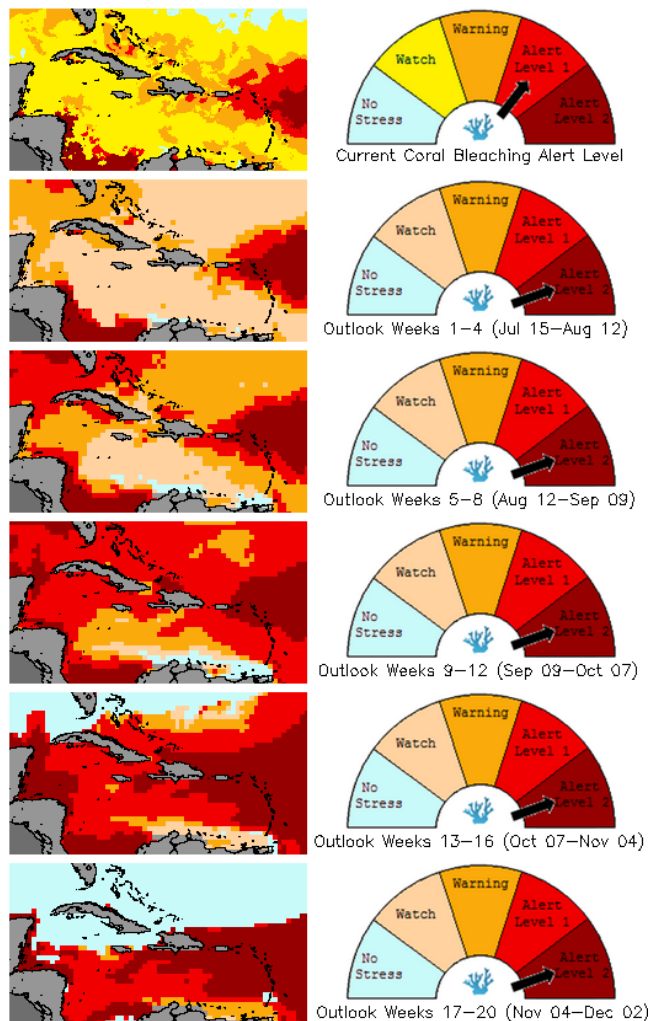
- 4-Month Probabilistic Outlook of July 16 predicts, with a high probability, that heat stress will reach/exceed Alert Levels 1 & 2 throughout most of the Caribbean basin and Gulf of Mexico, including in SE. Florida, the Florida Keys, the Bahamas and Turks and Caicos.



[Click here to track the 4-month probabilistic bleaching outlook](#)

Bleaching Alert Area and Outlook

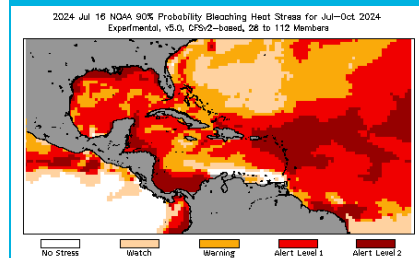
Caribbean Satellite Bleaching Alert Area and Outlook
2024-07-16



Caribbean Bleaching Outlook

As of 16 July, 2024, NOAA CRW's 4-Month Coral Bleaching Outlook (90% probability) indicates that Bleaching Alert-level 1 and higher heat stress, already present in the SW. Caribbean and the Leeward Is., will expand into other areas of the basin in the next month, encompass most of the basin in 9-12 weeks' time, and remain until the end of the forecast period. NOTE: alerts are not uniform across the basin.

[View all 5-km NOAA CRW Regional Virtual Stations](#)



[4-month Coral Bleaching Outlook \(90% probability\)](#)

[4-month Coral Bleaching Outlook \(60% probability\)](#)

[Click here for more information about the NOAA Coral Reef Watch methodology](#)

For more information contact:

Adrian Trotman
atrotman@cimh.edu.bb

Courtney Forde
cforde@cimh.edu.bb

Shontelle Stoute
sstoute@cimh.edu.bb