

Announcement

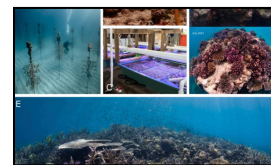
NOTE THE REVISED CORAL BLEACHING HEAT STRESS CATEGORY SYSTEM SHOWN IN THE ALERT GUIDE ON PAGE 1. THE REGIONAL VIRTUAL STATIONS ARE CURRENTLY BEING UPDATED TO INCLUDE THE NEW CATEGORIES.



REPORT CORAL BLEACHING OBSERVATIONS



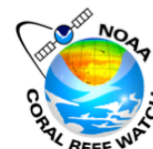
NOAA CONFIRMS 4TH GLOBAL CORAL BLEACHING EVENT



RESTORATION AS A MEANINGFUL AID TO ECOLOGICAL RECOVERY OF CORAL REEFS

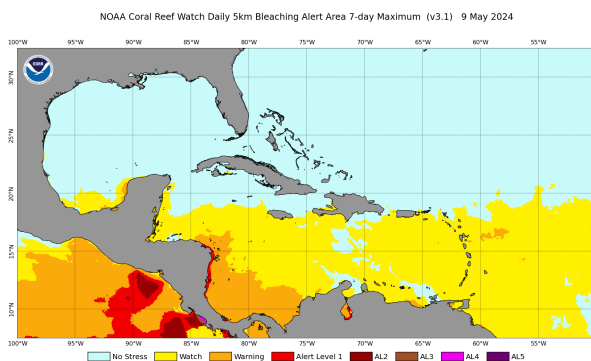


CARIBBEAN CORAL REEF WATCH



Notable Observations

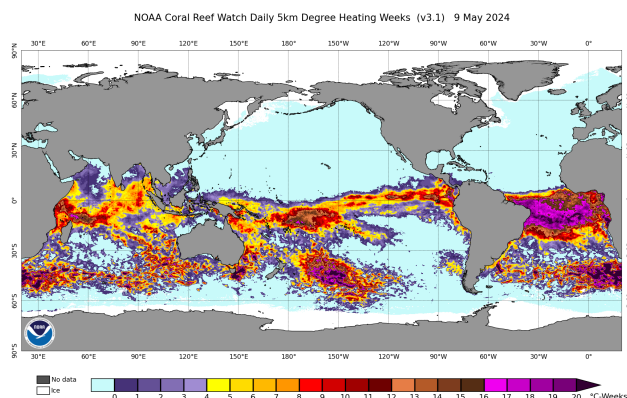
- ▶ Bleaching Warning-level heat stress is present in the SW Caribbean. Bleaching Watch persists in the rest of the basin and W. Atlantic Ocean. A stretch of Nicaragua’s coast and the Chiriquí Lagoon (Panama) have reached Alert Level 1.
- ▶ ENSO Alert System Status: **El Niño Advisory** / **La Niña Watch**. A transition from El Niño to ENSO-neutral is likely in the next month. La Niña may develop in June-August (49% chance) or July-September (69% chance). [Read more](#)



[Click here to track current conditions](#)

Current Global Conditions (As of May 9)

- ▶ Alert Levels 1-5 heat stress is present at the following NOAA CRW Regional Virtual Stations: São Tomé and Príncipe, Brazil, Costa Rica Pacific, Panama Atlantic West, Panama Pacific West, Phoenix Is. (Kiribati), and at ~ 35 % of Polynesia stations, ~40 % of Melanesia, ~74% of other SE Asia stations, ~ 35% of the Coral Triangle, 60% of South Asia stations, and ~19% of the West Indian Ocean. The most extreme accumulated heat stress, with Degree Heating Week (DHW) values of 16°C-weeks or greater (i.e. Alert Level 4 or higher), is present in the S. Atlantic and parts of the S. Pacific and W. Indian Oceans.

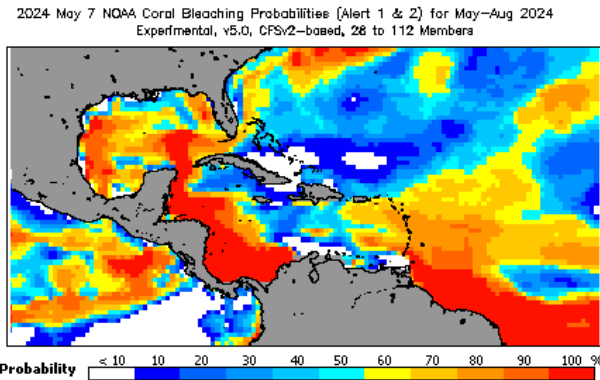


Alert Level Guide

Stress Level	Interpretation
No Stress	No Bleaching
Watch	
Warning	Risk of Possible Bleaching
Alert Level 1	Risk of Reef-Wide Bleaching
Alert Level 2	Risk of Reef-Wide Bleaching with Mortality of Heat-Sensitive Corals
Alert Level 3	Risk of Multi-Species Mortality
Alert Level 4	Risk of Severe, Multi-Species Mortality (> 50% of corals)
Alert Level 5	Risk of Near Complete Mortality (> 80% of corals)

Current Outlook (May-August 2024)

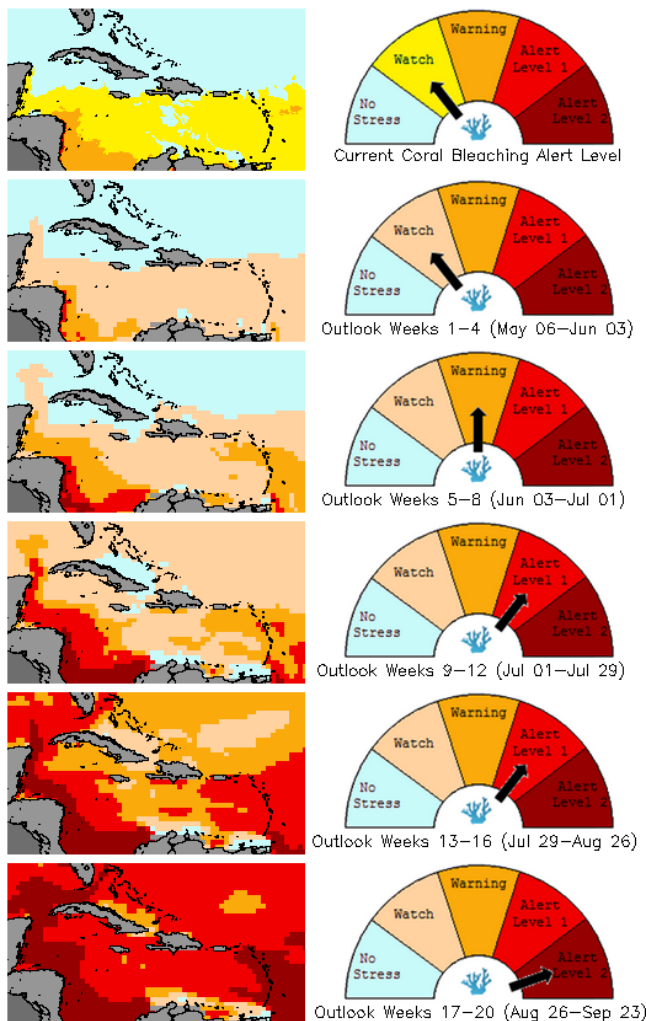
- ▶ 4-Month Probabilistic Outlook predicts, with a high probability, that heat stress will reach/exceed Alert Levels 1 and 2 in the W. and SW. Caribbean basin, and around Barbados, Trinidad & Tobago, and Grenada.



[Click here to track the 4-month probabilistic bleaching outlook](#)

Bleaching Alert Area and Outlook

Caribbean Satellite Bleaching Alert Area and Outlook
2024-05-09

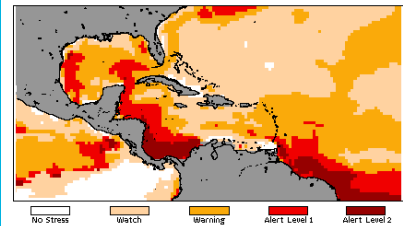


Caribbean Bleaching Outlook

As of 9 May, 2024, NOAA CRW's 4-Month Coral Bleaching Outlook (90% probability) shows Bleaching Watch and Warning conditions are already present in the Caribbean; Alert Level 1 will start developing ~7 weeks out, and Alert Level 2 will begin building ~10 weeks out and remain until at least the end of the forecast period. NB: Alerts are not uniform across the basin.

[View all 5-km NOAA CRW Regional Virtual Stations](#)

2024 May 7 NOAA 90% Probability Bleaching Heat Stress for May-Aug 2024
Experimental, v5.0, CFSv2-based, 28 to 112 Members



[Map of 90% Probability Bleaching Heat Stress 4-month Outlook shows where heat stress is very likely.](#)

[Click here for more information about the NOAA Coral Reef Watch methodology](#)

For more information contact:

Adrian Trotman
atrotman@cimh.edu.bb

Courtney Forde
cforde@cimh.edu.bb

Shontelle Stoute
sstoute@cimh.edu.bb