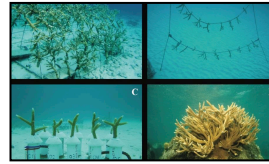


Announcement

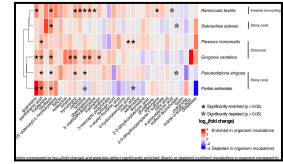
HEAT STRESS (ALERT LEVELS 1 AND 2) REMAINS IN THE SOUTHERN CARIBBEAN BUT IS PREDICTED TO DISAPPEAR BY MID-DECEMBER.



REPORT CORAL BLEACHING OBSERVATIONS



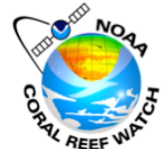
CORAL REEF RESTORATION METHODS IN THE CARIBBEAN AND FLORIDA KEYS



BENTHIC EXOMETABOLITES AND THEIR ECOLOGICAL SIGNIFICANCE ON THREATENED CARIBBEAN CORAL REEFS

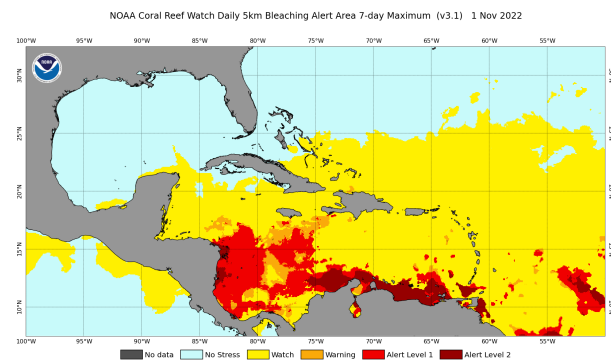


CARIBBEAN CORAL REEF WATCH



Notable Observations

- ▶ Most of the region is at bleaching watch.
- ▶ Parts of the Southern Caribbean (Leeward Antilles, Trinidad and Tobago, Venezuela, Colombia, Panama Atlantic West, Costa Rica Atlantic, and Nicaragua are at Bleaching Alert Levels 1 and 2.
- ▶ Minimal bleaching observed in Belize, which reached Bleaching Warning conditions earlier this season. (Reported)



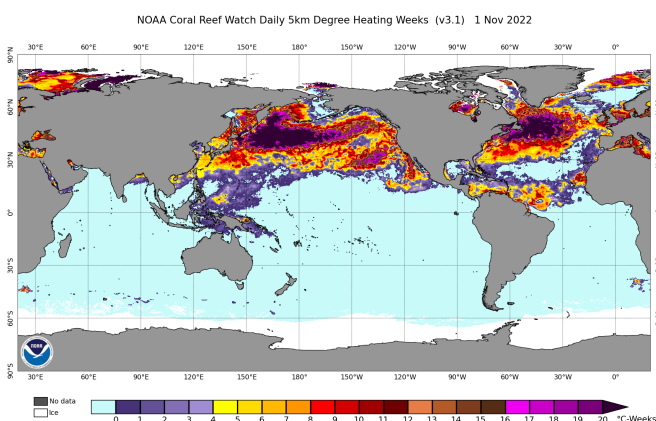
[Click here to track current conditions](#)

Current Global Conditions

- ▶ Bleaching Alert Level 1 conditions existing around E. FSM (Micronesia), Papua New Guinea, and Maluku (Indonesia).
- ▶ Venezuela, W. Panama, Hong Kong, Eritrea, and Al Madinah and Makkah under Alert Level 2.

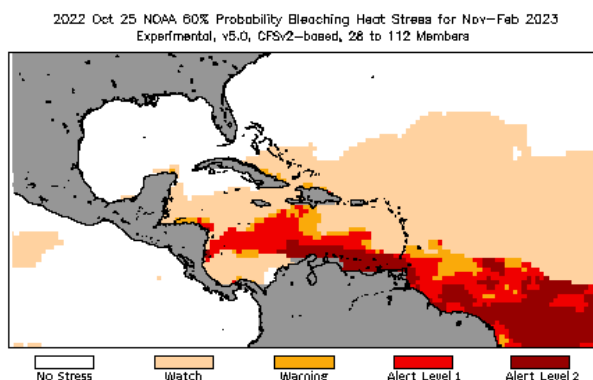
Alert Level Guide

Alert Level	Interpretation
No Stress	No Thermal Stress
Watch	Low-level thermal stress
Warning	Thermal stress is accumulating
Alert level 1	Bleaching expected
Alert level 2	Widespread bleaching and some mortality expected



Current Outlook (November '22 - February '23)

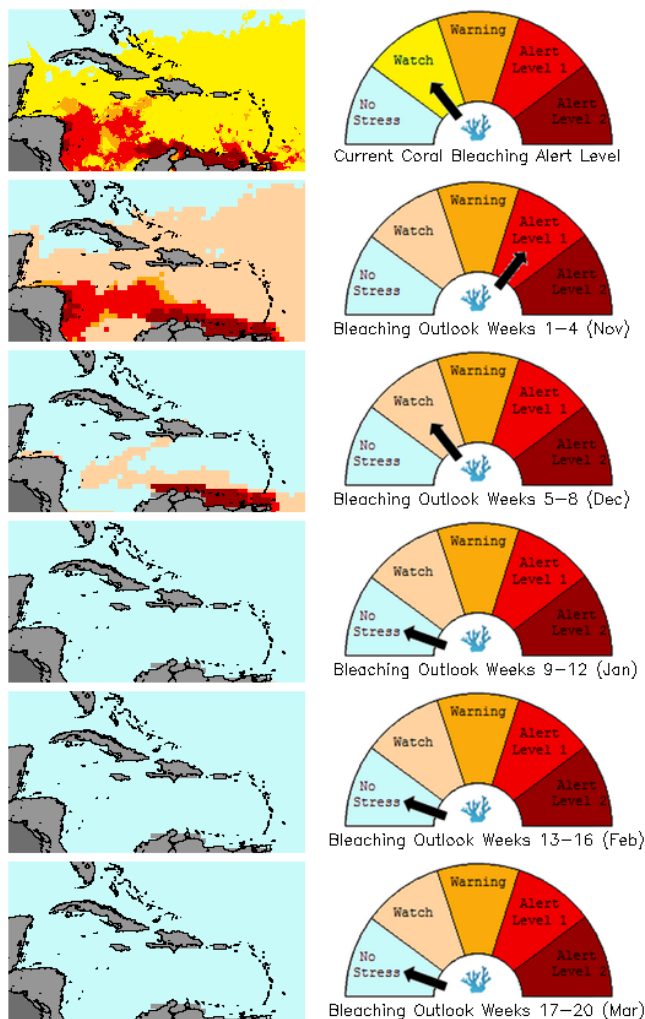
- 4-Month Outlook indicates that Coral Bleaching Heat Stress will be at Alert Level 2 in the Southern Caribbean region



[Click here to track the 4-month bleaching outlook](#)

Bleaching Alert Area and Outlook

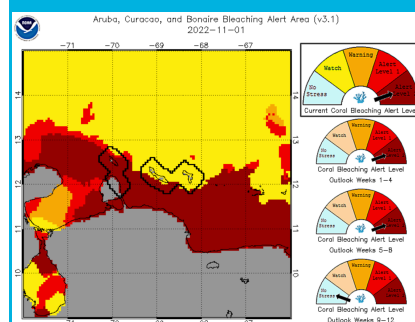
Caribbean Satellite Bleaching Alert Area and Outlook
2022–10–31



Caribbean Bleaching Outlook

The bleaching outlook for the Caribbean continues to indicate that the Leeward Antilles, and Trinidad and Tobago will be experiencing Alert Level 2 conditions in November, extending into December.

[View all 5-km Regional Virtual Stations here](#)



[Conditions around Leeward Antilles at Alert Level 2.](#)

[Click here for more information about the NOAA Coral Reef Watch methodology](#)

For more information contact:

Adrian Trotman
atrotman@cimh.edu.bb

Courtney Forde
cforde@cimh.edu.bb

Shontelle Stoute
sstoute@cimh.edu.bb