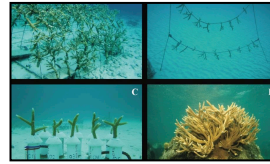


Announcement

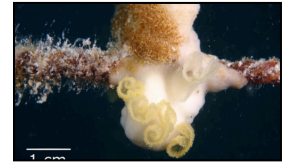
**HEAT STRESS
CONDITIONS NOW
PREDICTED TO BE AT
ALERT LEVEL 1 AND 2
THROUGHOUT THE
CARIBBEAN BASIN
OCTOBER AND
NOVEMBER.**



**REPORT CORAL
BLEACHING
OBSERVATIONS**



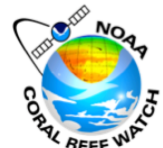
**CORAL REEF RESTORATION
METHODS IN THE
CARIBBEAN AND FLORIDA
KEYS**



**EXPLORING THE
PERFORMANCE OF MID-
WATER LAGOON NURSERIES
FOR CORAL RESTORATION
IN THE MALDIVES**

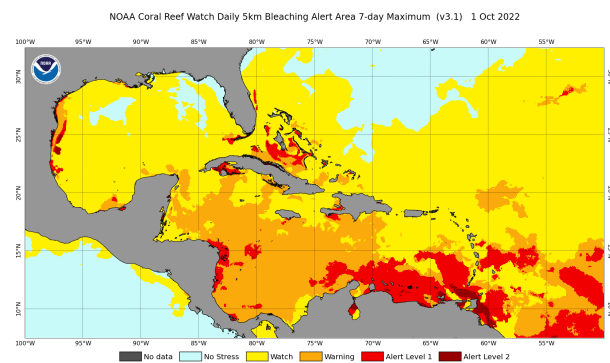


CARIBBEAN CORAL REEF WATCH



Notable Observations

- ▶ Entire region continues to be under bleaching watch conditions. Warning conditions becoming more prevalent.
- ▶ Central Bahamas, SW Hispaniola and Leeward Antilles experiencing Alert Level 1 conditions. Trinidad and Tobago experiencing Alert Level 2 conditions.
- ▶ Waters around the Windward islands at Alert Level 1.



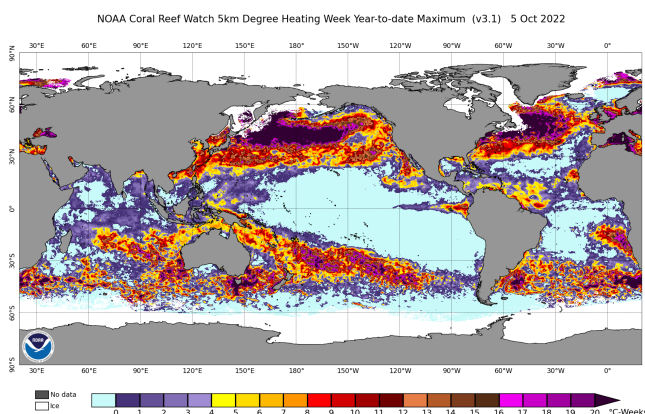
[Click here to track current conditions](#)

Current Global Conditions

- ▶ Bleaching Alert Level 1 conditions existing around Cape Verde Is., Colombia, E. Panama, Costa Rica, Nicaragua, N. Mariana Is., W. FSM (Micronesia), Palau, N. Myanmar, Djibouti, W. Yemen, and Jazan (Saudi Arabia).
- ▶ Venezuela, W. Panama, Hong Kong, Eritrea, and Al Madinah and Makkah under Alert Level 2.

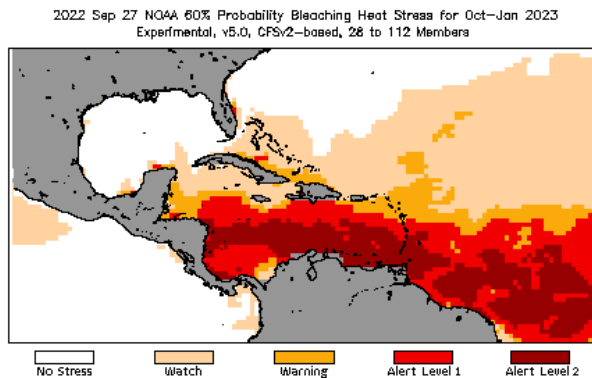
Alert Level Guide

Alert Level	Interpretation
No Stress	No Thermal Stress
Watch	Low-level thermal stress
Warning	Thermal stress is accumulating
Alert level 1	Bleaching expected
Alert level 2	Widespread bleaching and some mortality expected



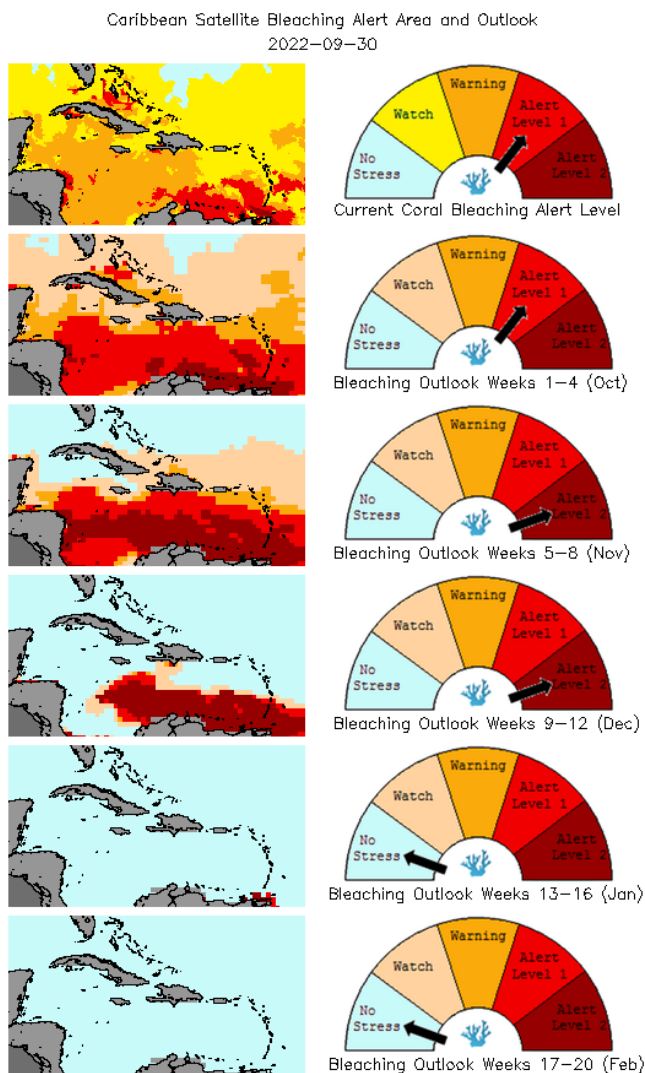
Current Outlook (October '22 - January '23)

- 4-Month Outlook indicates that Coral Bleaching Heat Stress will be at bleaching levels from October to December.



[Click here to track the 4-month bleaching outlook](#)

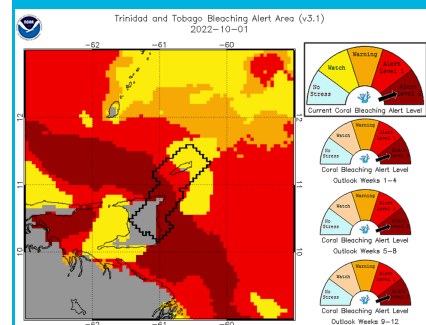
Bleaching Alert Area and Outlook



Caribbean Bleaching Outlook

The bleaching outlook for the Caribbean indicates that the Windward Islands, the Leeward Antilles, and Trinidad and Tobago will be experiencing Alert Level 1 and 2 conditions from October, extending into December.

[View all 5-km Regional Virtual Stations here](#)



[Trinidad and Tobago currently experiencing Alert Level 2 conditions.](#)

[Click here for more information about the NOAA Coral Reef Watch methodology](#)

For more information contact:

Adrian Trotman
atrotman@cimh.edu.bb

Courtney Forde
cforde@cimh.edu.bb

Shontelle Stoute
sstoute@cimh.edu.bb