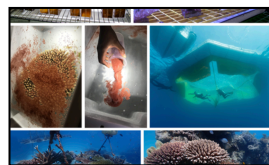


Announcement

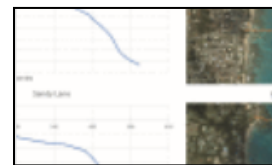
**HEAT STRESS
CONDITIONS NOT
PREDICTED TO REACH
BLEACHING LEVELS IN
MOST OF THE
CARIBBEAN EXCEPT
AROUND THE S. TURKS
& CAICOS ISLANDS.**



**REPORT CORAL
BLEACHING
OBSERVATIONS**



**HORIZON SCAN OF RAPIDLY
ADVANCING CORAL
RESTORATION APPROACHES
FOR 21ST CENTURY REEF
MANAGEMENT**



**CORAL REEF RESTORATION
FOR COASTAL PROTECTION:
CRAFTING TECHNICAL AND
FINANCIAL SOLUTIONS**

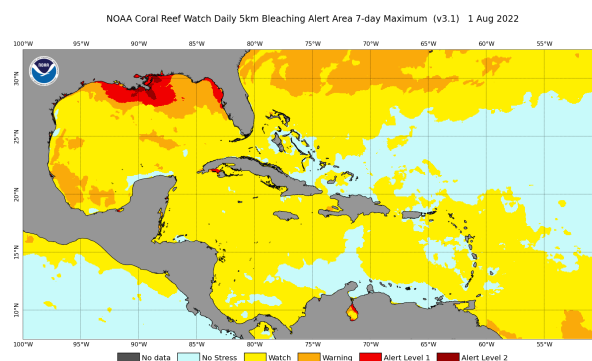


CARIBBEAN CORAL REEF WATCH



Notable Observations

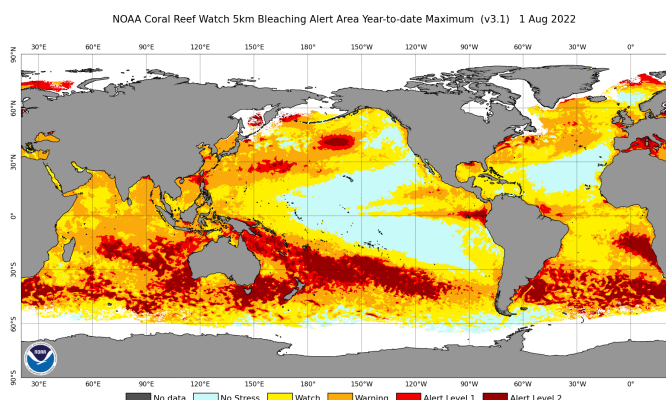
- ▶ Warming continues in the Gulf of Mexico, the Caribbean basin, and the Western Atlantic.
- ▶ Bleaching watch alerts issued throughout the region. Every regional virtual station currently registering a watch alert.
- ▶ The average global land and ocean temperature for Jan-Jun 2022 0.85°C above 20th Century average of 13.5°C... [Read more](#)



[Click here to track current conditions](#)

Current Global Conditions

- ▶ Bleaching Alert Level 1 conditions currently persisting in Ryukyu Is. (Japan), N. Taiwan, Dongsha (Taiwan), N. Vietnam, Ogasawara Islands, N. Myanmar, and W. Persian Gulf.
- ▶ Southern Taiwan, Hong Kong, Hainan Island (China), and Northern Philippines under Alert Level 2.

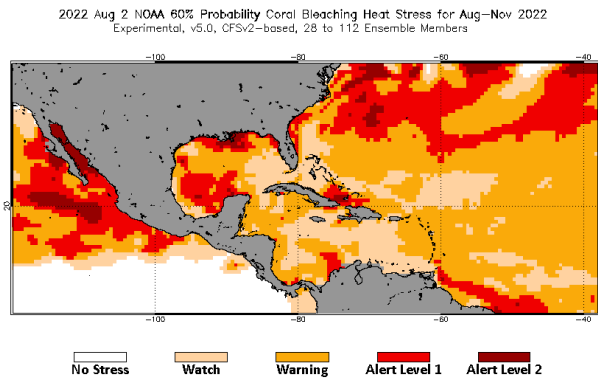


Alert Level Guide

Alert Level	Interpretation
No Stress	No Thermal Stress
Watch	Low-level thermal stress
Warning	Thermal stress is accumulating
Alert level 1	Bleaching expected
Alert level 2	Widespread bleaching and some mortality expected

Current Outlook (August–November 2022)

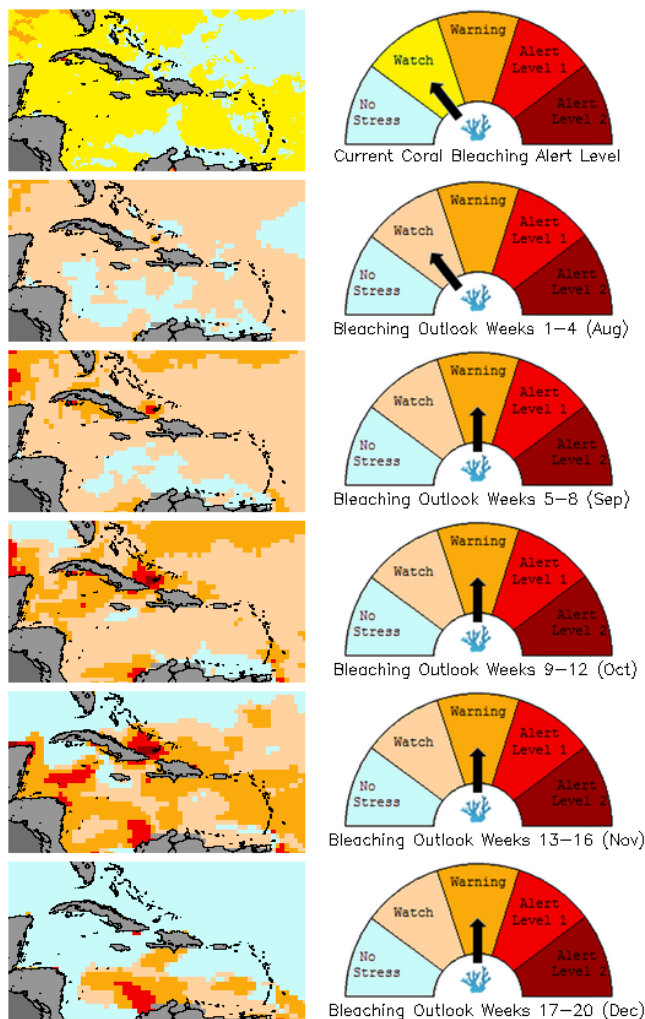
- 4-Month Outlook indicates that Coral Bleaching Heat Stress should not be at bleaching levels for most of the region except around Southern Turks & Caicos.



[Click here to track the 4-month bleaching outlook](#)

Bleaching Alert Area and Outlook

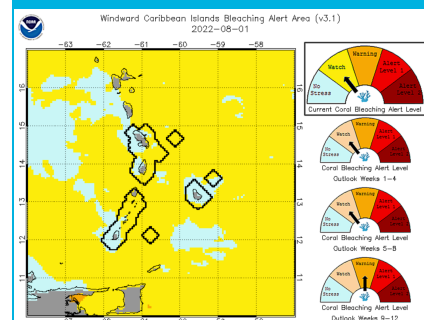
Caribbean Satellite Bleaching Alert Area and Outlook
2022–07–31



Caribbean Bleaching Outlook

The bleaching alert and outlook for the Caribbean indicates that extensive watch and warning alert level conditions could be expected throughout the region in October and November. Significant heat stress not predicted for most of the region.

[View all 5-km Regional Virtual Stations here](#)



[Windward Islands currently under a coral bleaching watch.](#)

[Click here for more information about the NOAA Coral Reef Watch methodology](#)

For more information contact:

Adrian Trotman
atrotman@cimh.edu.bb

Courtney Forde
cforde@cimh.edu.bb

Shontelle Stoute
sstoute@cimh.edu.bb