



HIGHLIGHTS FOR FEBRUARY

- ✚ Stations in eleven of thirteen (13) parishes received below-normal rainfall.
- ✚ No parish experienced meteorological drought conditions.
- ✚ Below-normal to near-normal rainfall is forecast for March to May 2022.
- ✚ Near-normal temperatures are expected for the next three months.

What Happened: December 2021 – February 2022

Based on analysis (image to the right) very wet conditions were noted in sections of St. Elizabeth and Manchester. Mild levels of wetness were noted in Portland and Kingston & St. Andrew (KSA). In contrast mild dryness was noted in sections of St. Catherine, St. Thomas, St. Ann, Trelawny and St. James.

There were some parishes receiving sufficient rainfall which resulted in farming communities getting some relief from the dry conditions despite, the general below-normal rainfall for Jamaica

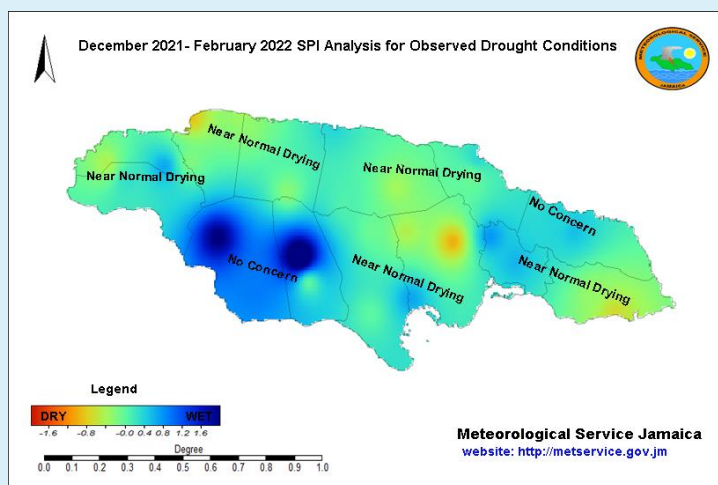
No parish experienced meteorological drought conditions in the January/February bi-monthly period.

Extreme temperatures, ranging from 1-3°C lower, were recorded in several locations across the island for the month of February 2022, when compared to February 2021.

Wet and Dry Conditions, December 2021 – February 2022

Read more by visiting our website:

<https://www.metservice.gov.jm/climate-products>



Seasonal Forecast: March – May 2022

Rainfall amounts for Jamaica are likely to be below-normal to near-normal, during the transition from the dry season to the early wet season (April & May). Based on the forecast (map insert) mild levels of dryness are likely for farming communities in many parishes. Western parishes, namely Hanover, Westmoreland and St. Elizabeth and Portland in the east, could benefit the most from rainfall during the next three months and experience mild levels of wetness.

With no parish experiencing meteorological drought then, these conditions could continue.

Temperatures for the next three months are likely to be near-normal as the northern hemisphere transitions from winter to spring.

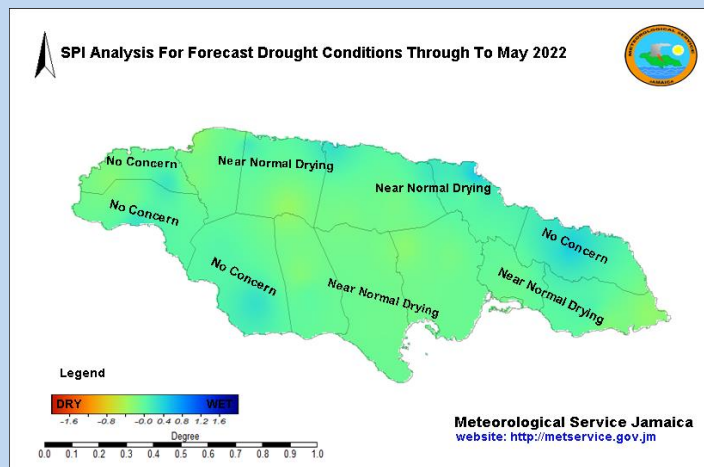
Possible Impacts

Should the forecast for below-normal to near-normal rainfall materialize, dry conditions could continue in farming communities dependent on rainfall for irrigation and therefore close monitoring is being recommended.

As the Meteorological Service continues to monitor conditions across the island, the advice is for stakeholders, be prudent in the use of available water, and to ensure that animals are properly hydrated.

Should the temperatures forecast materialize then, tolerable conditions should be expected over the next three months.

Wet and Dry Conditions, March – May 2022



Seasonal Outlook, March – May 2022

JAMAICA	Below-Normal (%)	Normal (%)	Above-Normal (%)
Rainfall Outlook	35	35	30
Temperature Outlook	33	33	33

ABOUT US:

This report provides short term precipitation forecasts, as well as drought monitoring products that will assist in making critical decisions about the growing season for crops, as well as irrigation scheduling and water management.

CONTACT US:

Meteorological Service, Jamaica, 65 ¾ Half Way Tree Road, Kingston 10

Telephone: 876-929-3700 / 876-929-3706, Email: request2@metservice.gov.jm