

Announcement

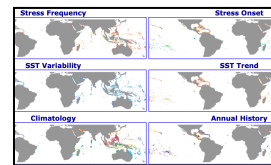
HEAT STRESS CONDITIONS ARE PREDICTED TO BE AT BLEACHING LEVELS IN THE CARIBBEAN FROM APPROXIMATELY SEPTEMBER TO DECEMBER.



REPORT CORAL BLEACHING OBSERVATIONS



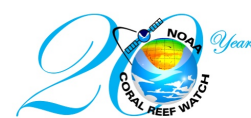
EFFECTS OF CORALLIVORY AND CORAL COLONY DENSITY ON CORAL GROWTH AND SURVIVAL



NEW: NOAA CORAL REEF WATCH'S (CRW) VERSION 3.1.1 THERMAL HISTORY PRODUCT SUITE, SPANNING 1985-2020

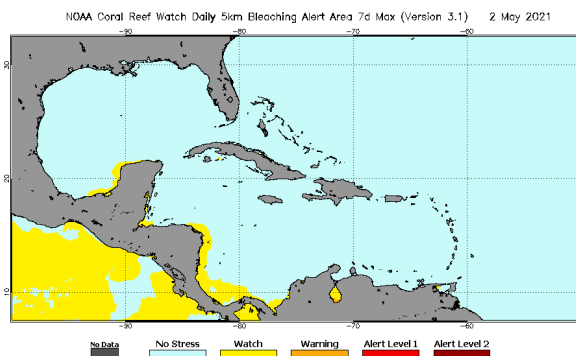


CARIBBEAN CORAL REEF WATCH



Notable Observations

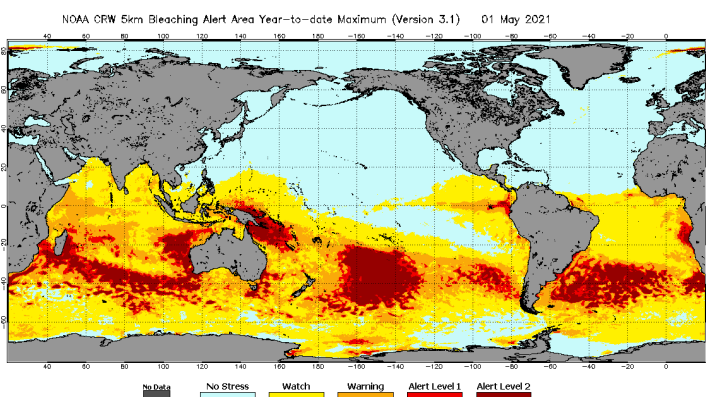
- ▶ Heat stress in the southwest Caribbean basin has begun to increase. However, not as significantly as last year
- ▶ Most of the eastern and northern Caribbean forecasted to not experience notable heat stress until August.
- ▶ In comparison to 2020, the predictions for 2021 provide a more positive outlook of heat stress impacts.



[Click here to track current conditions](#)

Current Global Conditions

- ▶ Bleaching watch and warning alerts persist in Brazil, Eastern Pacific, Polynesia, Micronesia, intensively throughout the Coral Triangle, Southeast Asia, and Southern Asia.
- ▶ Papua New Guinea under Alert Level 1. Shark Bay (Australia) and Houtman Abrolhos (Australia), under Alert Level 2.

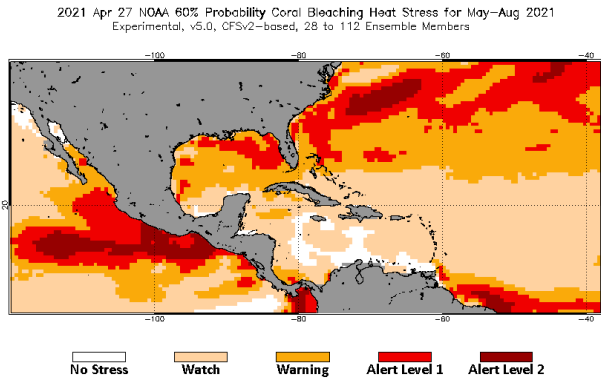


Alert Level Guide

Alert Level	Interpretation
No Stress	No Thermal Stress
Watch	Low-level thermal stress
Warning	Thermal stress is accumulating
Alert level 1	Bleaching expected
Alert level 2	Widespread bleaching and some mortality expected

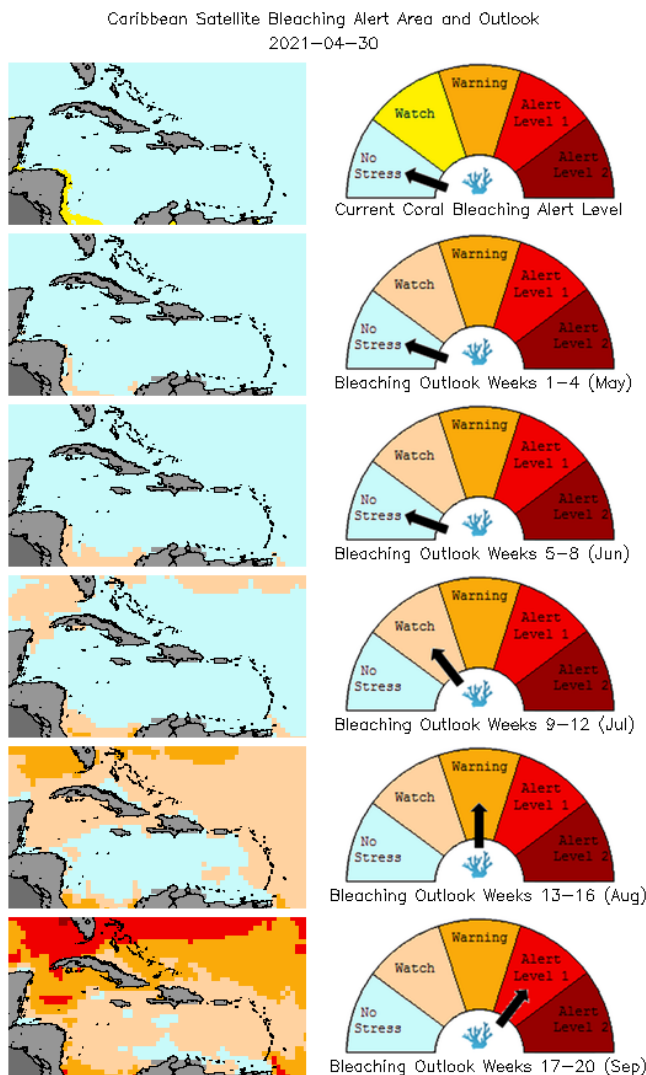
Current Outlook (May-August 2021)

- ▶ 4-Month Outlook predicts waters around Florida and the Bahamas will be in Bleaching Warning and Alert Level 1 conditions in September.



[Click here to track the 4-month bleaching outlook](#)

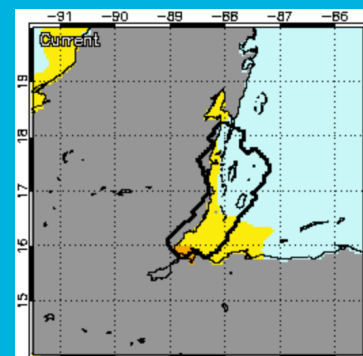
Bleaching Alert Area and Outlook



Caribbean Bleaching Outlook

The bleaching alert and outlook for the Caribbean is forecast to evolve from no stress for the next 8 weeks, to a watch in weeks 9-12, to a warning in weeks 13-16 and finally to alert level 1 in week 17, remaining there until week 20.

[View all 5-km Regional Virtual Stations here](#)



[Belize currently under a coral bleaching watch](#)

[Click here for more information about the NOAA Coral Reef Watch methodology](#)

For more information contact:

Adrian Trotman
atrotman@cimh.edu.bb

Courtney Forde
cforde@cimh.edu.bb

Shontelle Stoute
sstoute@cimh.edu.bb