



HYDROMETEOROLOGICAL SERVICE OF GUYANA

DROUGHT MONITORING BULLETIN

To observe, archive and understand Guyana's weather and climate and provide meteorological, hydrological and oceanographic services in support of Guyana's national needs and international obligations.



Issue # 34

August 2020

Highlights: The Drought Monitoring Bulletin was prepared using the WMO recommended Standardized Precipitation Index (SPI). The maps represent the 1-month (July 2020), 3-month (May – July 2020), 6-month (February – July 2020) and 12-month (August 2019 – July 2020) SPIs respectively, showing various degrees of wetness and/or dryness across the country.

Over the four SPI timescales, there is the persistence of generally dry conditions over several areas. By the end of October 2020, there is likely to be no major concern regarding surface soil wetness. However, by the end of November 2020, there might be concerns for long-term drought which could present a challenge for farming in some areas. We advise all stakeholders to keep monitoring drought and look for our monthly updates.

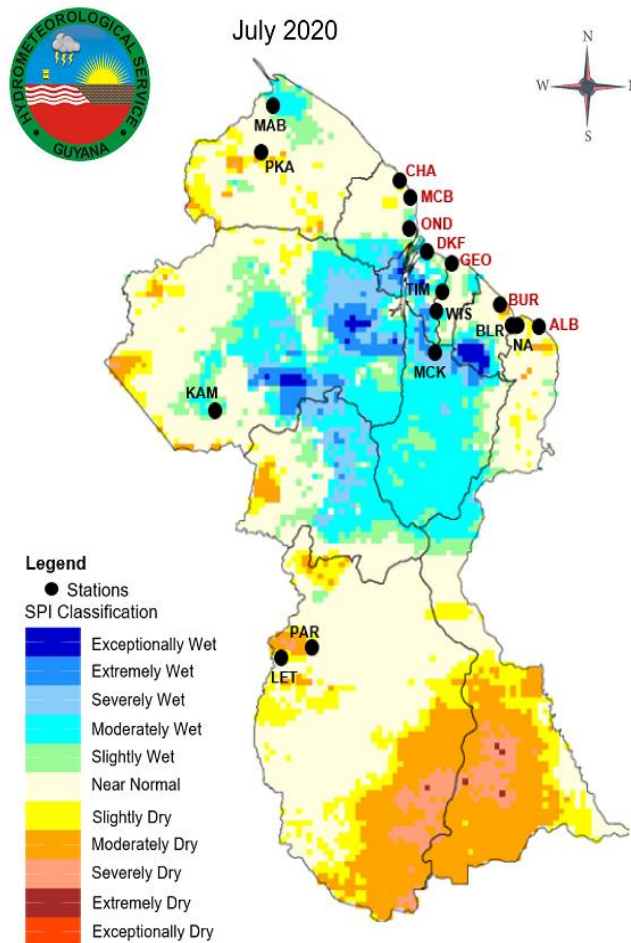


Fig 1: 1-Month Standardized Precipitation Index (SPI)

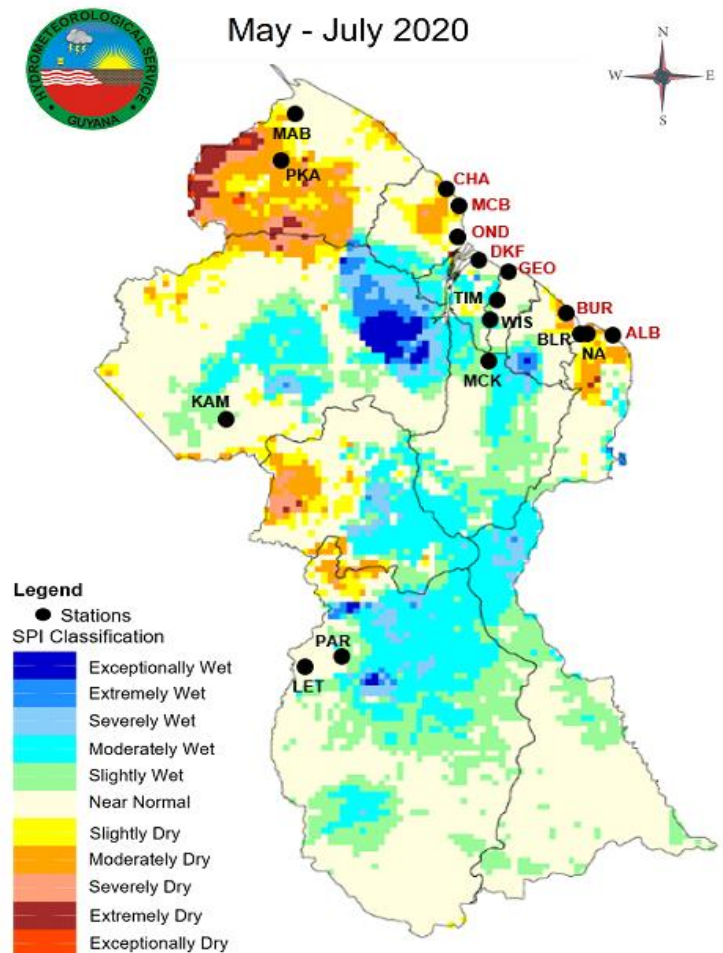


Fig.2: 3-Month Standardized Precipitation Index (SPI)



February - July 2020

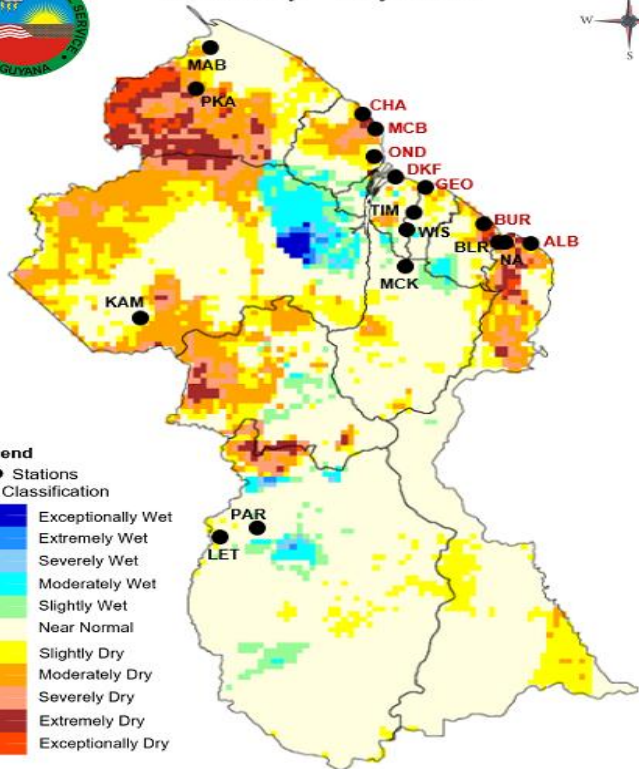


Fig.3: 6-Month Standardized Precipitation Index (SPI)



August 2019 - July 2020

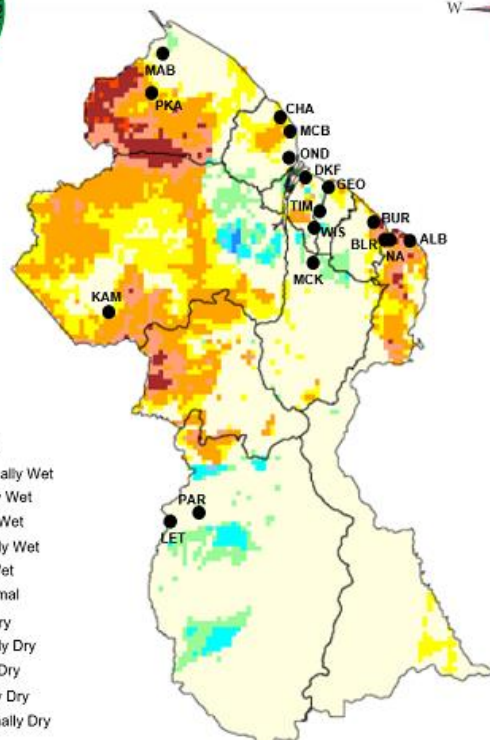
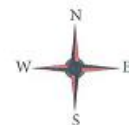


Fig.4: 12-Month Standardized Precipitation Index (SPI)

STANDARDIZED PRECIPITATION INDEX (SPI) CLASSIFICATIONS

SPI Value	Category	SPI Value	Category
-0.50 to -0.01	Near Normal	0.50 to 0.01	Near Normal
-0.80 to -0.51	Slightly dry	0.80 to 0.51	Slightly wet
-1.30 to -0.81	Moderately dry	1.30 to 0.81	Moderately wet
-1.60 to -1.31	Severely dry	1.60 to 1.31	Very wet
-2.00 to -1.61	Extremely dry	2.00 to 1.61	Extremely wet
less than or equal to -2.01	Exceptionally dry	greater than or equal to +2.01	Exceptionally wet

STATION ABBREVIATIONS

PKA -PORT KAITUMA	OND -ONDERNEEMING	DKF -DE KINDEREN FRONT	ENM -ENMORE	BLR -BLAIRMONT	KAM -KAMARANG	ANI -ANNAI
WAU -WAUNA	UIV -UITVLUGT	LEN -LEONORA	TIM -TIMHERI	NAM -NEW AMSTERDAM	LET -LETHEM	EBI -EBINI
ANR -ANNA REGINA	DKB -DE KINDEREN BACK	GEO -GEORGETOWN	CGB -CANE GROVE BACK	PAR -PARISHARA	KUM -KUMU	MCK -M ^c KENZIE
WAL -WALES	ROH -ROSE HALL	SKL -SKELDON	BUR -BURMA	MAB -MABARUMA	CHA -CHARITY	BAR -BARTICA
KAI -KAIETEUR	KAM -KAMRANG	-	-	-	-	-

DROUGHT OUTLOOK

The forecast covering to the end of October 2020 (short-term) shows that there is no major concern for drought. However, when looking at the period from December 2019 to November 2020 (long-term), there are some drought concerns.

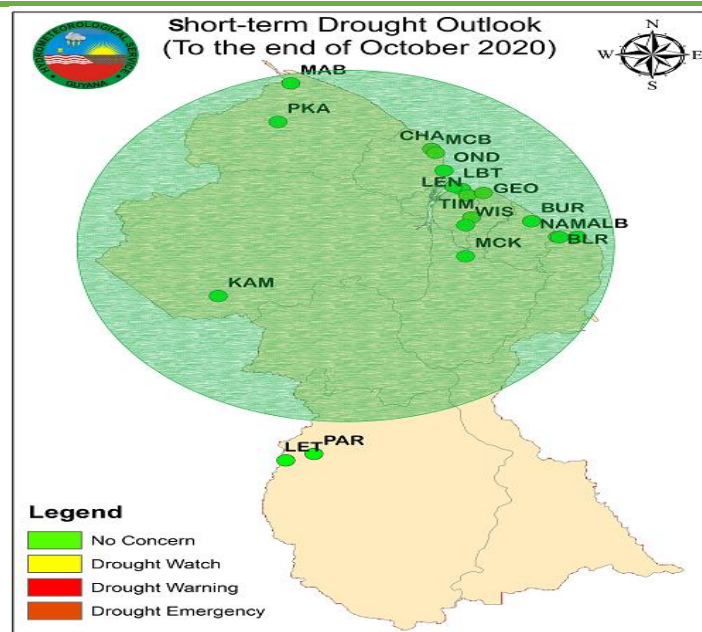


Fig.5: Short-term Drought Outlook by the end of October 2020 (Updated in July 2020- covering May to October 2020)

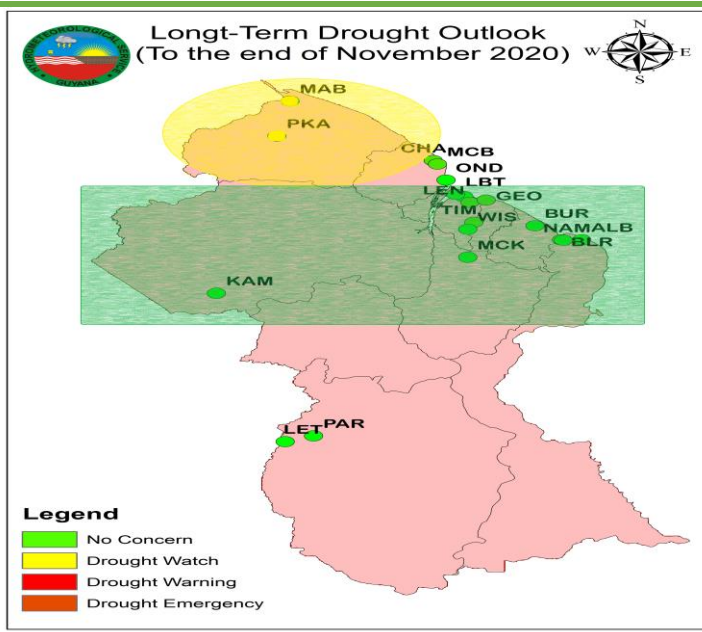


Fig.6: Long-term Drought Outlook by the end of November 2020 (Updated in July 2020 – covering December 2019 to November 2020)

Note: The 12-month SPI-based drought outlook (long-term) uses observations to forecast potential impacts on large surface water reservoirs and groundwater. While the 6-month outlook (short-term) can be used as an indication of effects on agriculture, etc.

ALERT LEVELS

Alert Levels	Meaning	Action Level
No Concern	No Drought Concern	<ul style="list-style-type: none"> monitor resources update and ratify management plans public awareness campaigns upgrade infrastructure
Drought Watch	Drought is Possible	<ul style="list-style-type: none"> keep updated protect resources and conserve water implement management plans response training monitor and repair infrastructure
Drought Warning	Drought Evolving	<ul style="list-style-type: none"> protect resources conserve and recycle water implement management plans release public service announcements last minute infrastructural repairs and upgrades report impacts
Drought Emergency	Drought of Immediate Concern	<ul style="list-style-type: none"> release public service announcements implement management and response plans enforce water restrictions and recycling enforce resource protection repair infrastructure report impacts

Source: caricof@cimh.edu.bb

This bulletin is prepared by the Hydrometeorological Service of Guyana. We welcome feedback, suggestions and comments on this bulletin. Correspondences should be directed to The Chief Hydrometeorological Officer at cho.guyana@gmail.com and the Agronomist at agrodonessa@yahoo.com. You may also visit our website at www.hydromet.gov.gy. Tele#: (592)-225-9303 and Fax#: (592)-226-1460.