



## HYDROMETEOROLOGICAL SERVICE OF GUYANA

### DROUGHT MONITORING BULLETIN

*To observe, archive and understand Guyana's weather and climate and provide meteorological, hydrological and oceanographic services in support of Guyana's national needs and international obligations.*



Issue # 32

June 2020

**Highlights:** The Drought Monitoring Bulletin was prepared using the WMO recommended Standardized Precipitation Index (SPI). The maps represent the 1-month (May 2020), 3-month (March – May 2020), 6-month (December 2019 – May 2020) and 12-month (June 2019 – May 2020 ) SPIs respectively, showing various degrees of wetness and/or dryness across the country.

Several areas across Guyana have shown rainfall deficiencies over the 4-timescales. However, there is no major drought concern at the moment because the May/July rainy season is expected to bring relief to the areas that have experienced drier than normal rainfall conditions in the previous months.

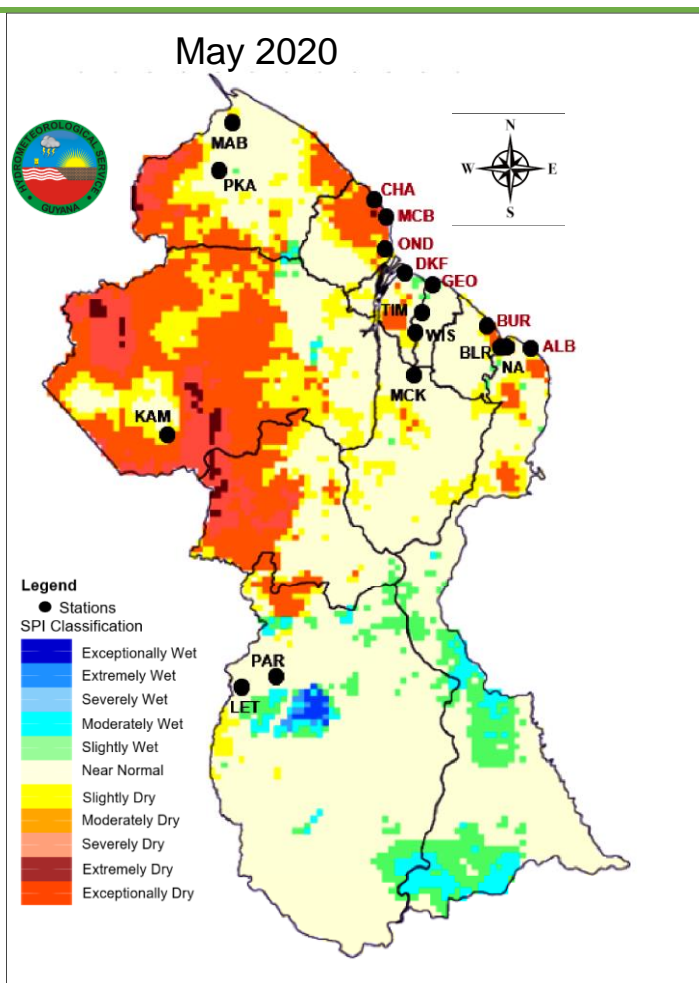


Fig 1: 1-Month Standardized Precipitation Index (SPI)

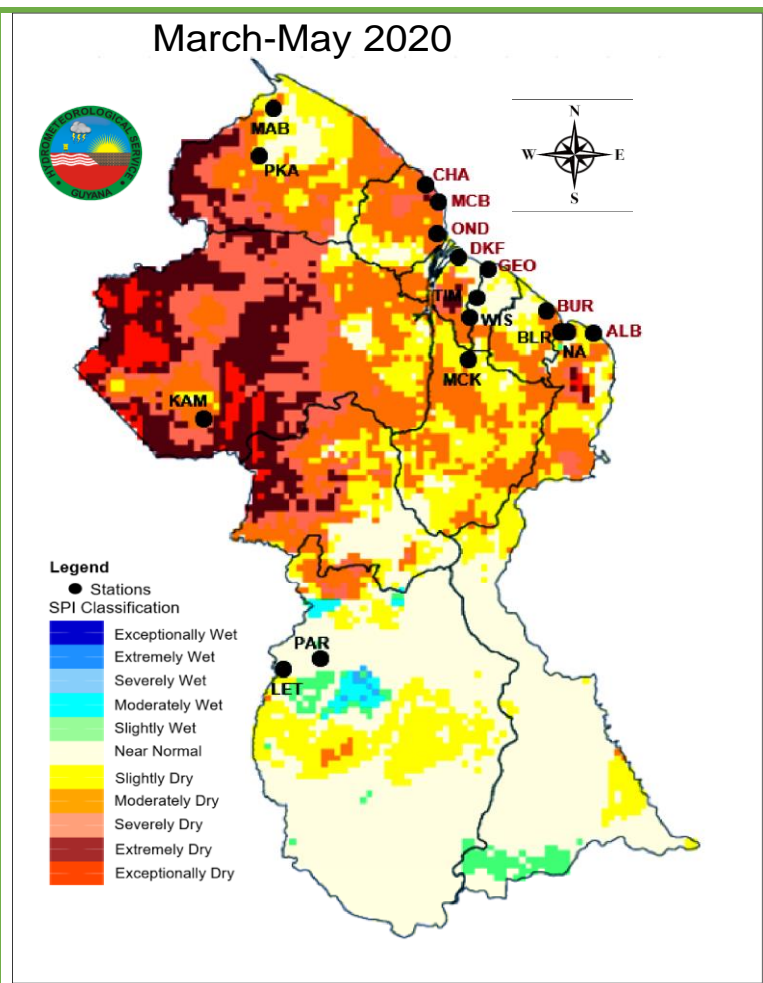


Fig.2: 3-Month Standardized Precipitation Index (SPI)

December 2019-May 2020

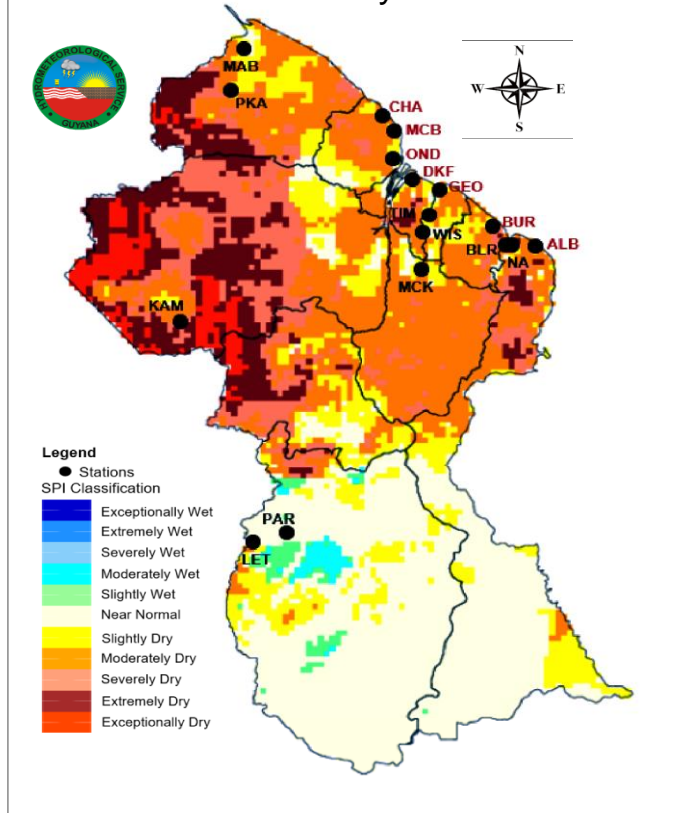


Fig.3: 6-Month Standardized Precipitation Index (SPI)

June 2019-May 2020

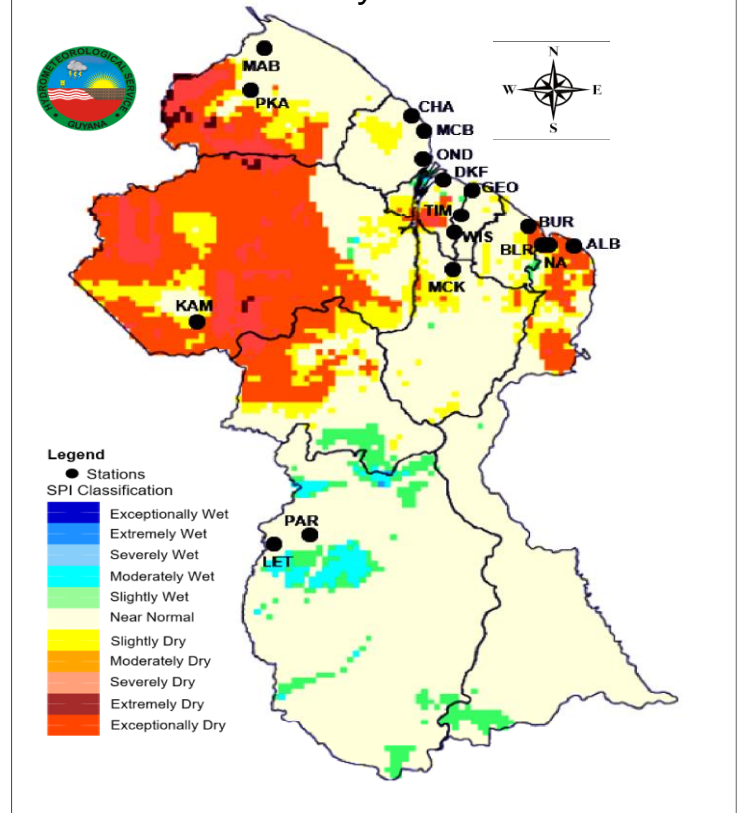


Fig.4: 12-Month Standardized Precipitation Index (SPI)

## STANDARDIZED PRECIPITATION INDEX (SPI) CLASSIFICATIONS

SPI Value	Category	SPI Value	Category
-0.50 to -0.01	Near Normal	0.50 to 0.01	Near Normal
-0.80 to -0.51	Slightly dry	0.80 to 0.51	Slightly wet
-1.30 to -0.81	Moderately dry	1.30 to 0.81	Moderately wet
-1.60 to -1.31	Severely dry	1.60 to 1.31	Very wet
-2.00 to -1.61	Extremely dry	2.00 to 1.61	Extremely wet
less than or equal to -2.01	Exceptionally dry	greater than or equal to +2.01	Exceptionally wet

## STATION ABBREVIATIONS

<b>PKA</b> -PORT KAITUMA	<b>OND</b> -ONDERNEEMING	<b>DKF</b> -DE KINDEREN FRONT	<b>ENM</b> -ENMORE	<b>BLR</b> -BLAIRMONT	<b>KAM</b> -KAMARANG	<b>ANI</b> -ANNAI
<b>WAU</b> -WAUNA	<b>UIV</b> -UITVLUGT	<b>LEN</b> -LEONORA	<b>TIM</b> -TIMHERI	<b>NAM</b> -NEW AMSTERDAM	<b>LET</b> -LETHEM	<b>EBI</b> -EBINI
<b>ANR</b> -ANNA REGINA	<b>DKB</b> -DE KINDEREN BACK	<b>GEO</b> -GEORGETOWN	<b>CGB</b> -CANE GROVE BACK	<b>PAR</b> -PARISHARA	<b>KUM</b> -KUMU	<b>MCK</b> -MCKENZIE
<b>WAL</b> -WALES	<b>ROH</b> -ROSE HALL	<b>SKL</b> -SKELDON	<b>BUR</b> -BURMA	<b>MAB</b> -MABARUMA	<b>CHA</b> -CHARITY	<b>BAR</b> -BARTICA
<b>KAI</b> -KAITEUR	<b>KAM</b> -KAMRANG	-	-	-	-	-

## DROUGHT OUTLOOK

Both the short and long-term drought outlooks are indicating no drought concern. We advise all stakeholders to keep monitoring drought and look for our monthly updates.

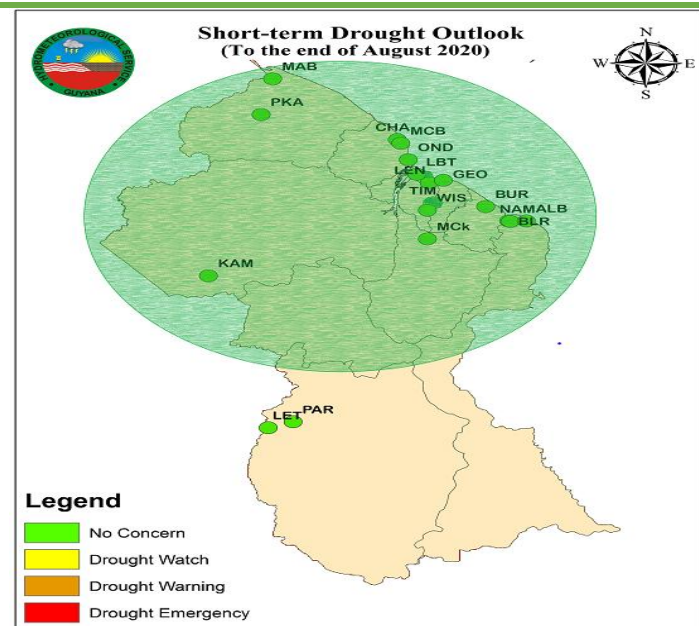


Fig.5: Short-term Drought Outlook by the end of August 2020  
(Updated in May 2020- covering March to August 2020)

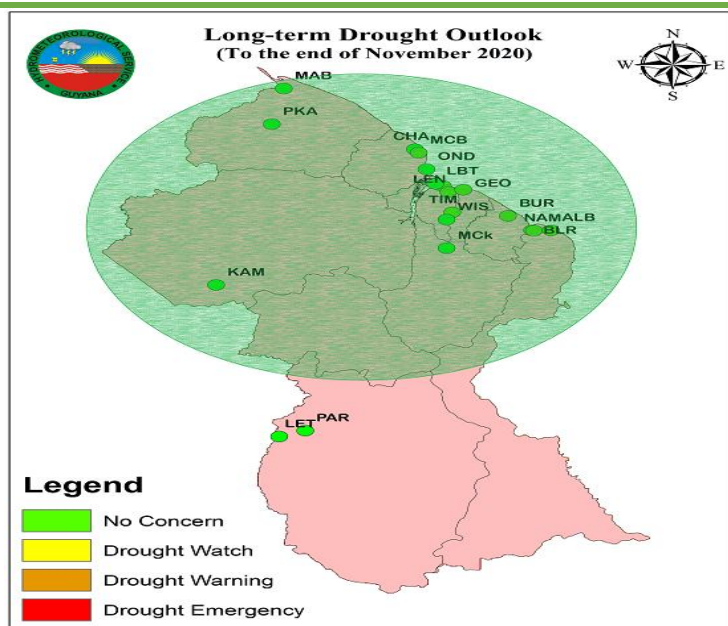


Fig.6: Long-term Drought Outlook by the end of November 2020  
(Updated in May 2020 – covering December 2019 to November 2020)

**Note:** The 12-month SPI-based drought outlook (long-term) uses observations to forecast potential impacts on large surface water reservoirs and groundwater. While the 6-month outlook (short-term) can be used as an indication of effects on agriculture, etc.

## ALERT LEVELS

Alert Levels	Meaning	Action Level
No Concern	No Drought Concern	<ul style="list-style-type: none"> <li>monitor resources</li> <li>update and ratify management plans</li> <li>public awareness campaigns</li> <li>upgrade infrastructure</li> </ul>
Drought Watch	Drought is Possible	<ul style="list-style-type: none"> <li>keep updated</li> <li>protect resources and conserve water</li> <li>implement management plans</li> <li>response training</li> <li>monitor and repair infrastructure</li> </ul>
Drought Warning	Drought Evolving	<ul style="list-style-type: none"> <li>protect resources</li> <li>conserve and recycle water</li> <li>implement management plans</li> <li>release public service announcements</li> <li>last minute infrastructural repairs and upgrades</li> <li>report impacts</li> </ul>
Drought Emergency	Drought of Immediate Concern	<ul style="list-style-type: none"> <li>release public service announcements</li> <li>implement management and response plans</li> <li>enforce water restrictions and recycling</li> <li>enforce resource protection</li> <li>repair infrastructure</li> <li>report impacts</li> </ul>

Source: [caricof@cimh.edu.bb](mailto:caricof@cimh.edu.bb)

This bulletin is prepared by the Hydrometeorological Service of Guyana. We welcome feedback, suggestions and comments on this bulletin. Correspondences should be directed to The Chief Hydrometeorological Officer at [cho.guyana@gmail.com](mailto:cho.guyana@gmail.com) and the Agronomist at [agrodonessa@yahoo.com](mailto:agrodonessa@yahoo.com). You may also visit our website at [www.hydromet.gov.gy](http://www.hydromet.gov.gy). Tele#: (592)-225-9303 and Fax#: (592)-226-1460.