

## Announcement

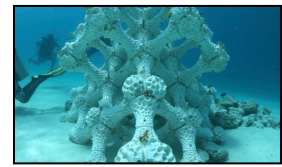
**SEA SURFACE TEMPERATURES (SSTs) IN THE CARIBBEAN RETURNING TO NO STRESS LEVELS AS NORTHERN HEMISPHERE WINTER APPROACHES.**



**REPORT CORAL BLEACHING OBSERVATIONS**



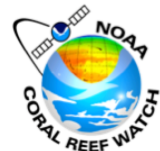
**HEALTHY MANGROVES HELP CORAL REEF FISHERIES UNDER CLIMATE STRESS**



**3-D PRINTED CORAL COULD HELP ENDANGERED REEFS**  
(PHOTO CREDITS: ALEX GOAD)

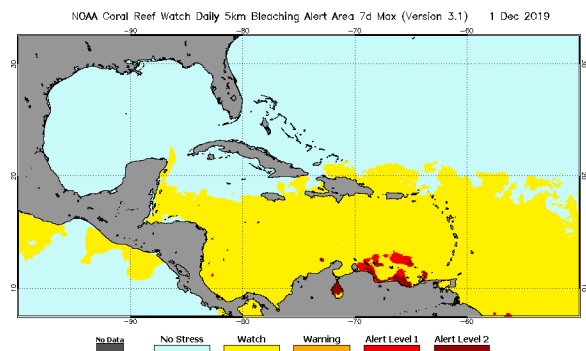


# CARIBBEAN CORAL REEF WATCH



## Notable Observations

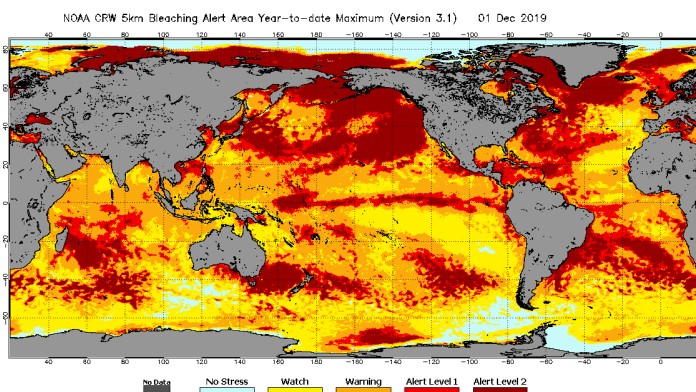
- ▶ Watch alert level issued throughout the Caribbean with the exception of Cuba and The Bahamas as Northern Hemisphere winter approaches and SSTs decrease.
- ▶ SSTs were 0.5-1°C above average in most areas after a reappearing unusual warmth in the Eastern Caribbean Sea and the western Tropical North Atlantic.



[Click here to track current conditions](#)

## Current Global Conditions

- ▶ Bleaching watch issued for areas of Brazil, and throughout the Pacific (especially Micronesia), Southeast Asia, Australia, and the Indian Ocean, along with a few warnings, most of which are in the Coral Triangle of SE Asia.
- ▶ Gilbert Is. (Kiribati), and Nauru (Micronesia) under Alert Level 2 conditions.

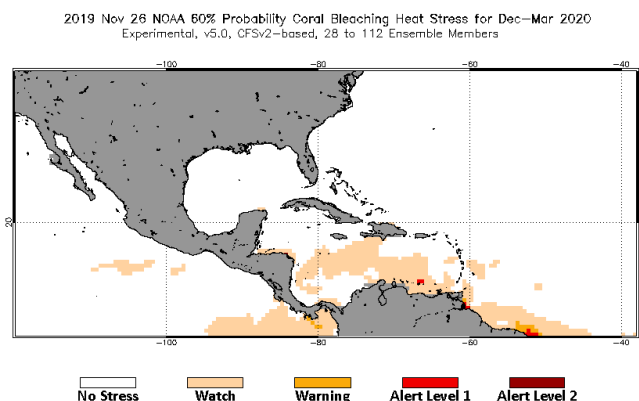


## Alert Level Guide

Alert Level	Interpretation
No Stress	No Thermal Stress
Watch	Low-level thermal stress
Warning	Thermal stress is accumulating
Alert level 1	Bleaching expected
Alert level 2	Widespread bleaching and some mortality expected

## Current Outlook (Dec 2019 - Mar 2020)

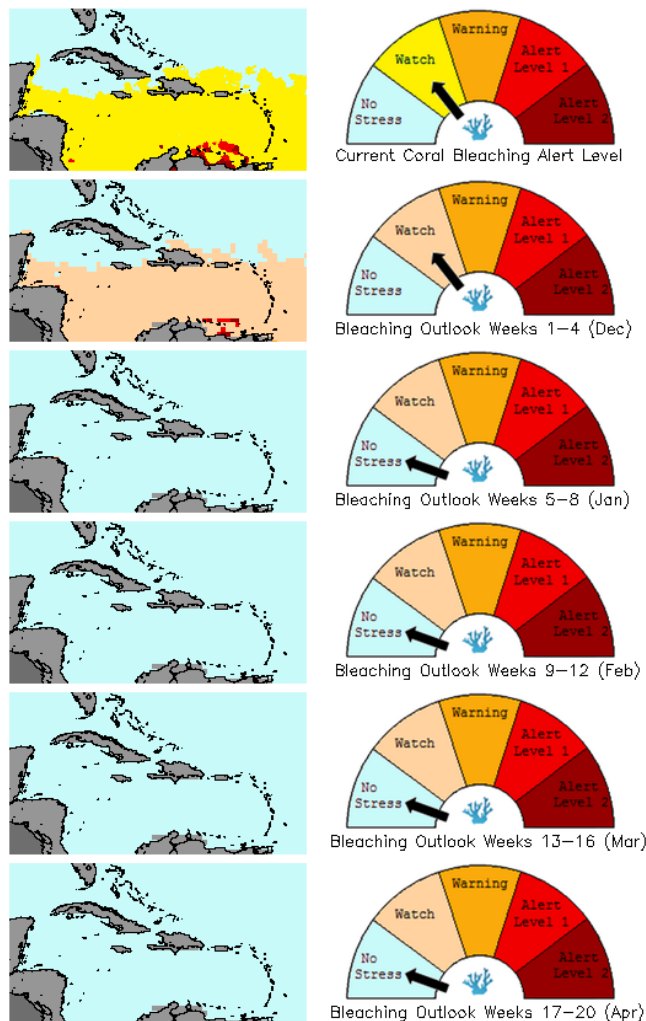
- 4-Month Outlook indicates that Coral Bleaching Heat Stress should be back to No stress levels in January.



[Click here to track the 4-month bleaching outlook](#)

## Bleaching Alert Area and Outlook

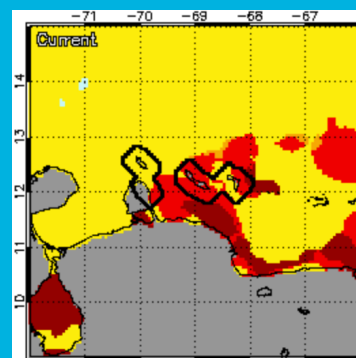
Caribbean Satellite Bleaching Alert Area and Outlook  
2019-11-30



## Caribbean Bleaching Outlook

**Alert Level 1 and 2 conditions currently existing in the Leeward Antilles but is predicted to return to watch level in the coming 1-4 weeks (see here). Region-wide, stress levels should return to no stress by January.**

[View all 5-km Regional Virtual Stations here](#)



**As of Dec 1, ABC Islands experiencing Alert Level 1 and 2 conditions**

[Click here for more information about the NOAA Coral Reef Watch methodology](#)

For more information contact:

Adrian Trotman  
atrotman(at)cimh.edu.bb

Courtney Forde  
cforde(at)cimh.edu.bb

Shontelle Stoute  
sstoute(at)cimh.edu.bb