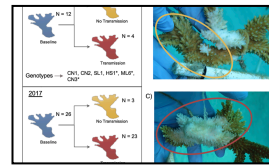


## Announcement

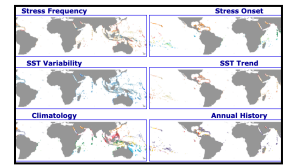
**SOUTHERN CARIBBEAN  
STILL EXPERIENCING  
ALERT LEVEL 2  
CONDITIONS BUT WITH  
N. HEMISPHERE  
WINTER APPROACHING,  
TEMPERATURES ARE  
DECREASING**



**REPORT CORAL  
BLEACHING  
OBSERVATIONS**



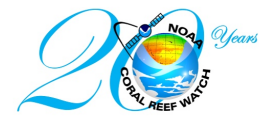
**ELKHORN CORAL  
ACTIVELY FIGHTING OFF  
DISEASES ON REEF**



**NOAA CORAL REEF WATCH  
RELEASES ITS VERSION  
3.1.0 THERMAL HISTORY  
PRODUCTS, SPANNING  
1985-2019**

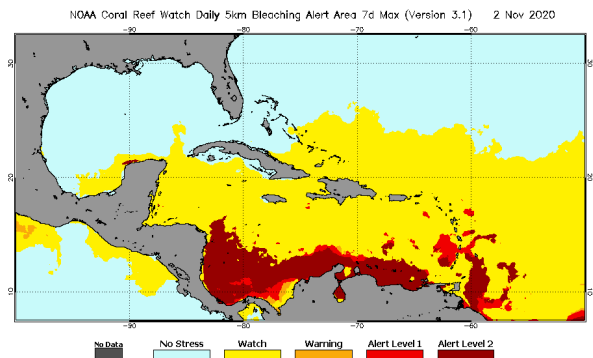


# CARIBBEAN CORAL REEF WATCH



## Notable Observations

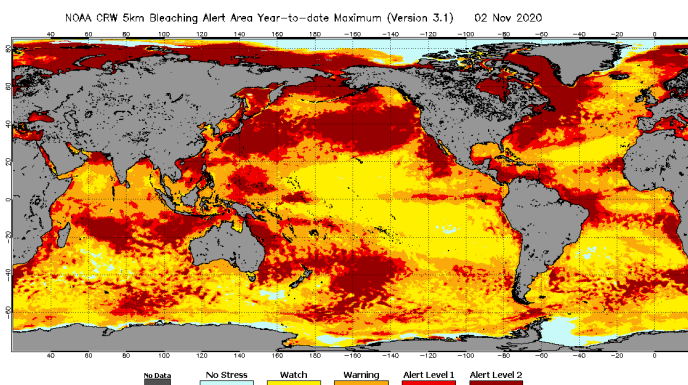
- ▶ Alert level 2 conditions continue to persist in the southern Caribbean, particularly the Leeward Antilles and around the southern Windward islands.
- ▶ Coral bleaching reported on west coast of Barbados.
- ▶ Bleaching watch stress level existing throughout the region. Windward Islands experiencing alert level 1 conditions while ABC Islands experiencing alert level 2 conditions.



[Click here to track current conditions](#)

## Current Global Conditions

- ▶ Monthly global sea surface temperatures in 2020 remain on track to be the second warmest in recorded history. [Read...](#)
- ▶ Watches and Warning exists throughout the oceans but no alert level 1 or 2 conditions currently existing at any of the monitoring stations globally, with the exception of the Caribbean

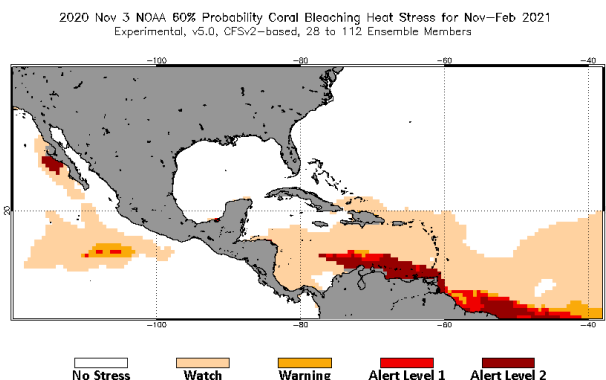


## Alert Level Guide

Alert Level	Interpretation
No Stress	No Thermal Stress
Watch	Low-level thermal stress
Warning	Thermal stress is accumulating
Alert level 1	Bleaching expected
Alert level 2	Widespread bleaching and some mortality expected

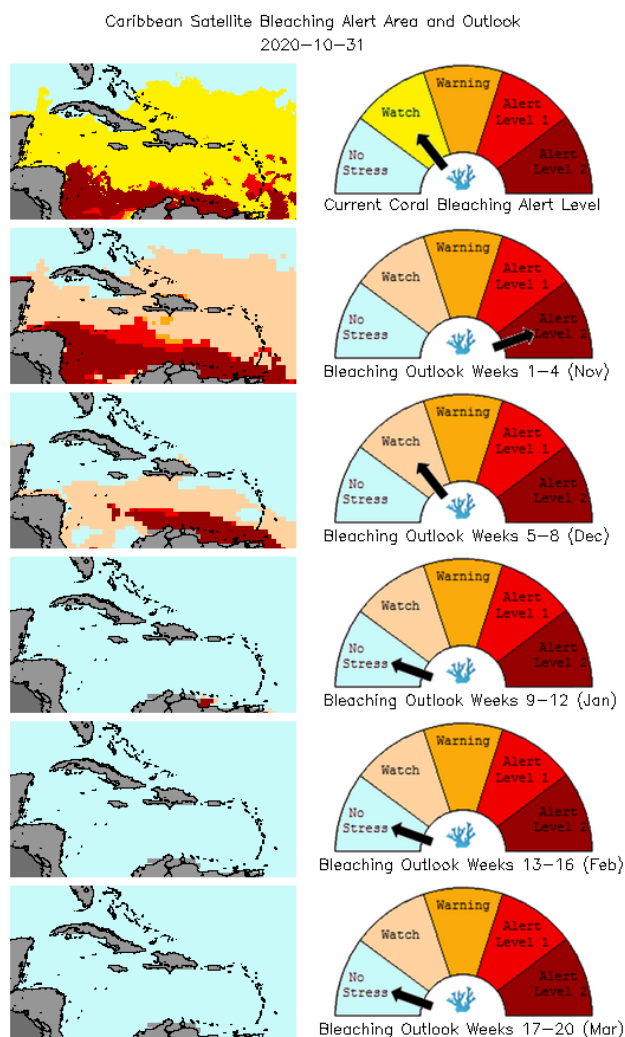
## Current Outlook (September-December 2020)

- 4-Month Outlook indicates that Coral Bleaching Heat Stress will be at Watch level for the C'bean Is. from Hispaniola east- and southwards, but at Alert Level 2 around the ABC Islands and Trinidad and Tobago.



[Click here to track the 4-month bleaching outlook](#)

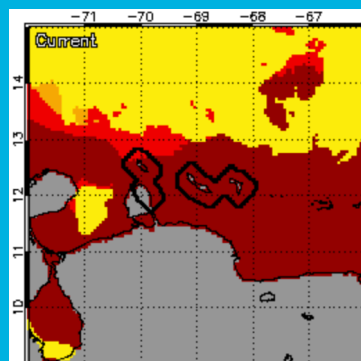
## Bleaching Alert Area and Outlook



## Caribbean Bleaching Outlook

Coral bleaching heat stress expected to decrease across the Windward Islands in Nov., whereas the ABC Islands and Trinidad and Tobago expected to remain in Alert Level 2 into Dec. Heat stress should not significantly affect coral reefs in the C'bean between Jan. and March.

[View all 5-km Regional Virtual Stations here](#)



**ABC Islands experiencing Alert Level 2 conditions**

[Click here for more information about the NOAA Coral Reef Watch methodology](#)

For more information contact:

Adrian Trotman  
atrotman@cimh.edu.bb

Courtney Forde  
cforde@cimh.edu.bb

Shontelle Stoute  
sstoute@cimh.edu.bb