

Announcement

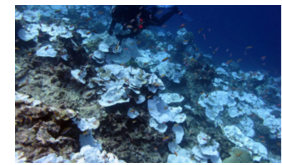
THERMAL STRESS CONDITIONS IN THE EASTERN CARIBBEAN ARE PREDICTED TO BE BELOW BLEACHING LEVELS UNTIL SEPTEMBER.



REPORT CORAL BLEACHING OBSERVATIONS
([CLICK HERE](#))



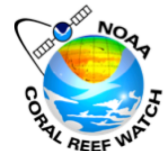
HEADLINE IMPACTS IN THE CARIBBEAN
([CLICK HERE](#))



MALDIVES WARNS BLEACHING COULD PROMPT REEF CLOSURE
([CLICK HERE](#))



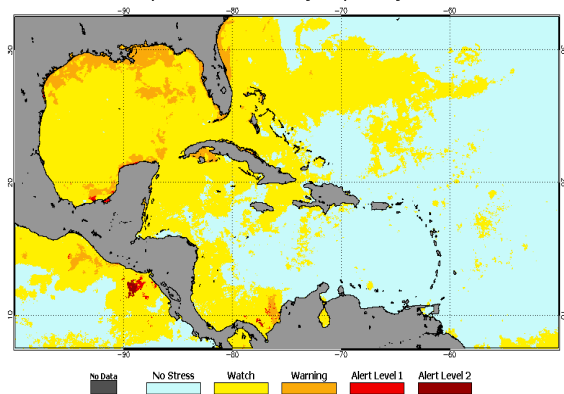
CARIBBEAN CORAL REEF WATCH



Notable Observations

- ▶ Sea surface temperature (SST) anomalies have decreased noticeably across most of the equatorial Pacific. La Niña is favoured to develop during the Northern Hemisphere summer with a high chance that it will remain through fall and winter 2016-7. [Read more.....](#)
- ▶ Warm SSTs observed in the Caribbean but no significant thermal stress expected outside the southwestern Caribbean at this time.
- ▶ Bleaching warnings issued for the Florida keys, N Bahamas, NW & SW Cuba. Bleaching watches in TCI, Belize, Cayman Isl., Jamaica & Hispaniola.

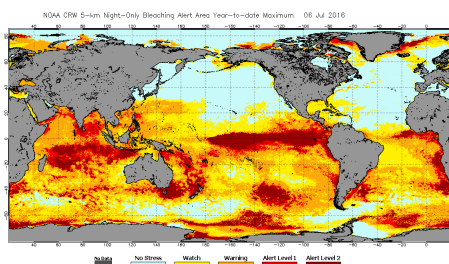
NOAA Coral Reef Watch Daily 5-km Geo-Polar Blended Night-Only Bleaching Alert Area 7d Max 6 Jul 2016



[Click here to track current conditions](#)

Current Global Conditions

- ▶ Slight paling already being seen in some corals in the Florida Keys. Devastating loss of reef building corals at Jarvis Island in the central Pacific Ocean.
- ▶ Bleaching intensifying in the southern and southeast Asia, coral triangle and Micronesia. Bleaching reported across Indian Ocean, Australia, western and central Pacific.

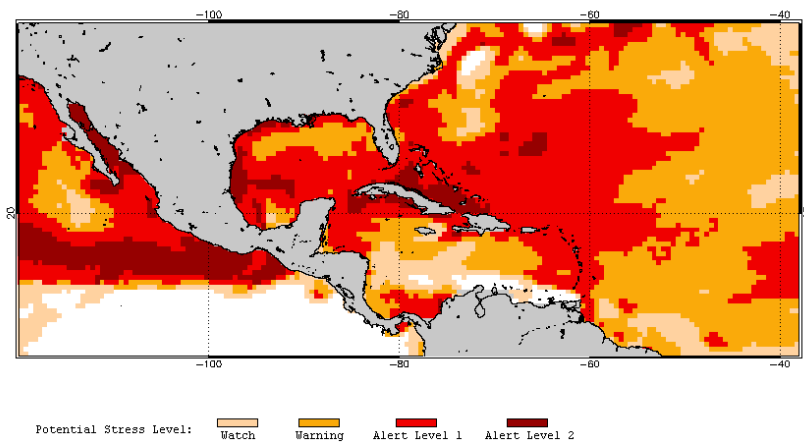


Alert Level Guide

Alert Level	Interpretation
No Stress	No Thermal Stress
Watch	Low-level thermal stress
Warning	Thermal stress is accumulating
Alert level 1	Bleaching expected
Alert level 2	Widespread bleaching and some mortality expected

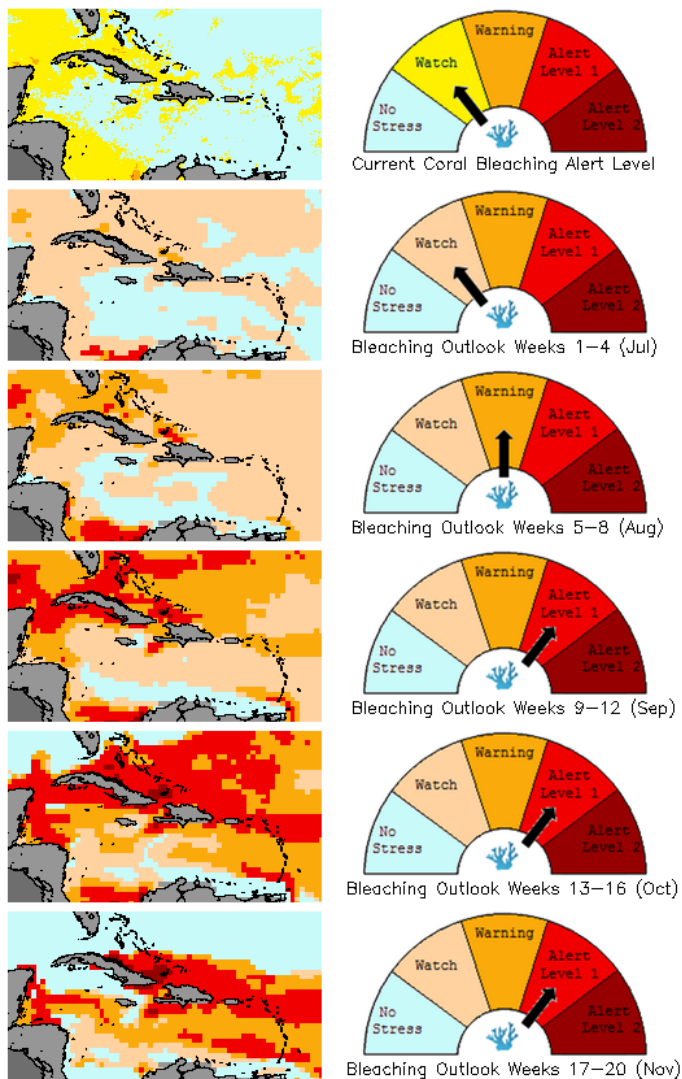
Current Outlook (July-Oct 2016)

2016 Jul 5 NOAA 60% Probability Coral Bleaching Thermal Stress for Jul-Oct 2016
Experimental, v3.0, CFSv2-based, 28-member Ensemble Forecast



Bleaching Alert Area and Outlook

Caribbean Satellite Bleaching Alert Area and Outlook
2016-06-30

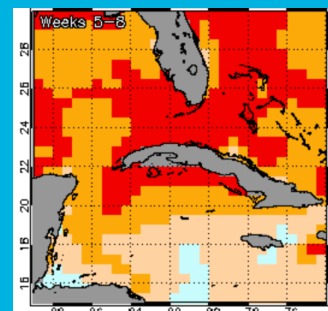


Caribbean Bleaching Outlook

A bleaching Alert Level 1-2 is predicted for the Caribbean in 9-12 weeks (Sept).

Thermal stress conditions are predicted to be below bleaching levels until Sept (9-12 weeks) except for parts of the NW and the SW Caribbean.

5-km Regional Virtual Stations



Bleaching Alert Level 1 for NW Cuba in 5-8 weeks (Aug)

[Click here for more information about the NOAA Coral Reef Watch methodology](#)

For more information contact:

Adrian Trotman
atrotman(at)cimh.edu.bb
Shelly-Ann Cox
scox(at)cimh.edu.bb
Courtney Forde
cforde(at)cimh.edu.bb