



**USAID**  
FROM THE AMERICAN PEOPLE



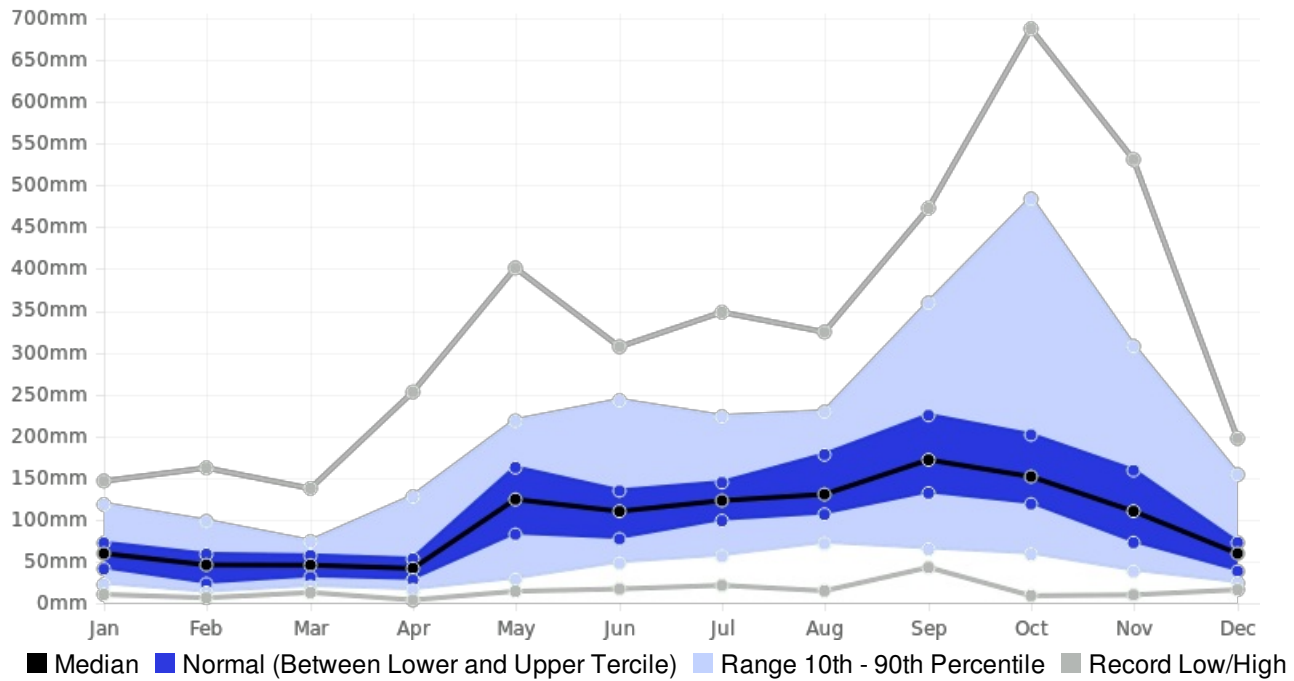
Generated By CAROGEN

## Puerto-Rico GUAYAMA Rainfall (AVERAGE:1348.7 mm) (Period: 1981 - 2010)

	<b>Wettest Value</b>	<b>Wettest Date</b>		<b>Driest Value</b>	<b>Driest Date</b>
Year On Record	2100.6 mm	2010		881.5 mm	1995
Month On Average	203.6 mm	October		48.5 mm	March
Month On Record	687.3 mm	October 1985		3.8 mm	April 1989
3-month period on record	1050.8 mm	August to October 1985		39.6 mm	October to December 1989

# GUAYAMA, Puerto-Rico - Monthly Rainfall

(Location: 18°N, -66.1°W; Period of record: 1981-2010)



# GUAYAMA, Puerto-Rico - Seasonal Rainfall

(Location: 18°N, -66.1°W; Period of record: 1981-2010)

