



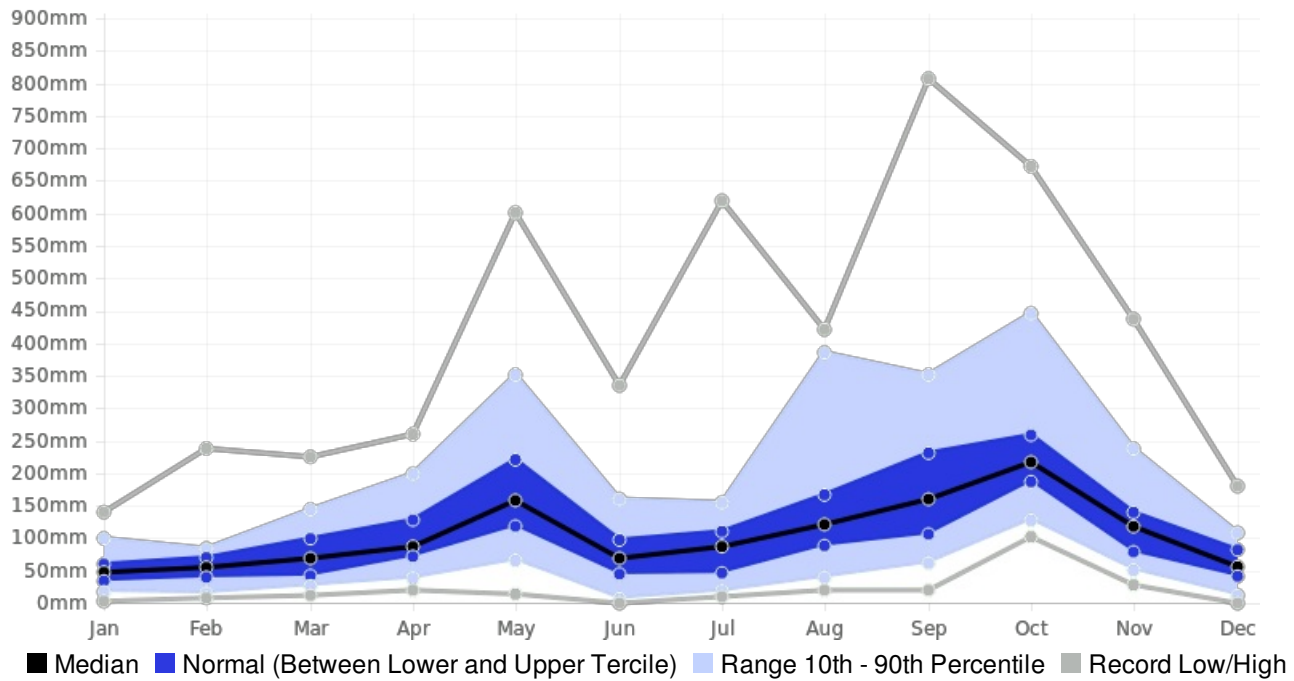
Generated By CAROGEN

Jamaica Potsdam Rainfall (AVERAGE:1529.3 mm) (Period: 1981 - 2010)

	Wettest Value	Wettest Date		Driest Value	Driest Date
Year On Record	2360 mm	2005		999 mm	2009
Month On Average	260.9 mm	October		54.7 mm	January
Month On Record	807 mm	September 2002		0 mm	June 1991 June 1993 December 2007
3-month period on record	1082 mm	September to November 2002		43 mm	June to August 1993

Potsdam, Jamaica - Monthly Rainfall

(Location: 17.957°N, -77.695°W; Period of record: 1981-2010)



Potsdam, Jamaica - Seasonal Rainfall

(Location: 17.957°N, -77.695°W; Period of record: 1981-2010)

