



USAID
FROM THE AMERICAN PEOPLE



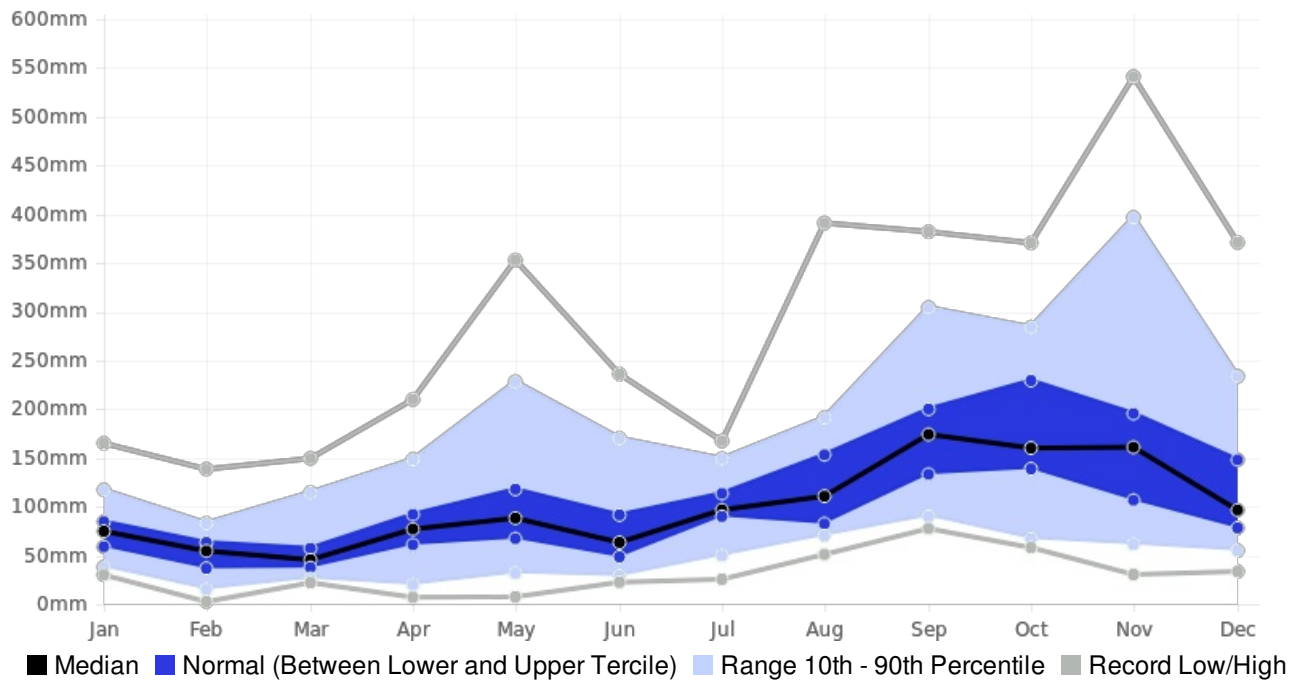
Generated By CAROGEN

Guadeloupe STE-ANNE-MAR Rainfall (AVERAGE:1375.3 mm) (Period: 1981 - 2010)

	Wettest Value	Wettest Date		Driest Value	Driest Date
Year On Record	2197 mm	2004		803 mm	1983
Month On Average	186.4 mm	November		53.1 mm	February
Month On Record	541 mm	November 2003		2.5 mm	February 1983
3-month period on record	1059.5 mm	September to November 2004		63.5 mm	January to March 1983

STE-ANNE-MAR, Guadeloupe - Monthly Rainfall

(Location: 16.3°N, -61.3°W; Period of record: 1981-2010)



STE-ANNE-MAR, Guadeloupe - Seasonal Rainfall

(Location: 16.3°N, -61.3°W; Period of record: 1981-2010)

