



USAID
FROM THE AMERICAN PEOPLE



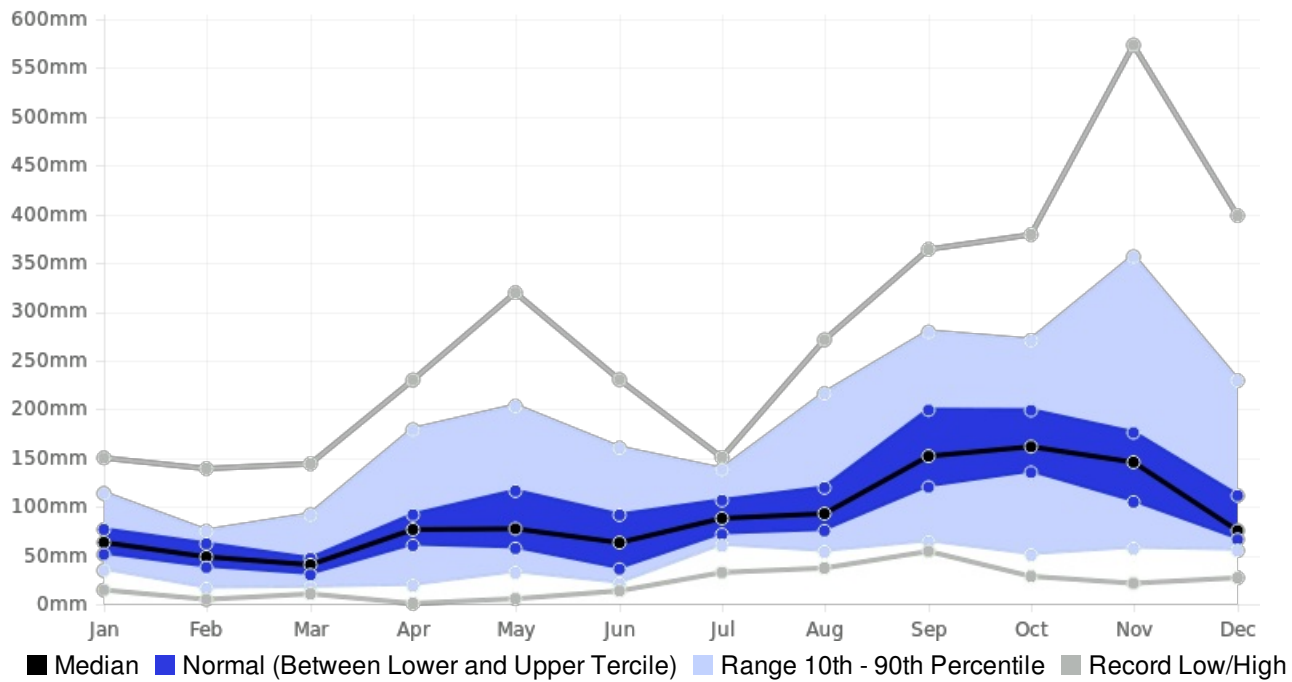
Generated By CAROGEN

Guadeloupe STE-ANNE-COUR Rainfall (AVERAGE:1257.3 mm) (Period: 1981 - 2010)

	Wettest Value	Wettest Date		Driest Value	Driest Date
Year On Record	2090.5 mm	2004		652.5 mm	1997
Month On Average	173.2 mm	November		47 mm	March
Month On Record	573.5 mm	November 2003		0.8 mm	April 1988
3-month period on record	1069.5 mm	September to November 2004		58.5 mm	February to April 2003

STE-ANNE-COUR, Guadeloupe - Monthly Rainfall

(Location: 16.3°N, -61.3°W; Period of record: 1981-2010)



STE-ANNE-COUR, Guadeloupe - Seasonal Rainfall

(Location: 16.3°N, -61.3°W; Period of record: 1981-2010)

