



USAID
FROM THE AMERICAN PEOPLE



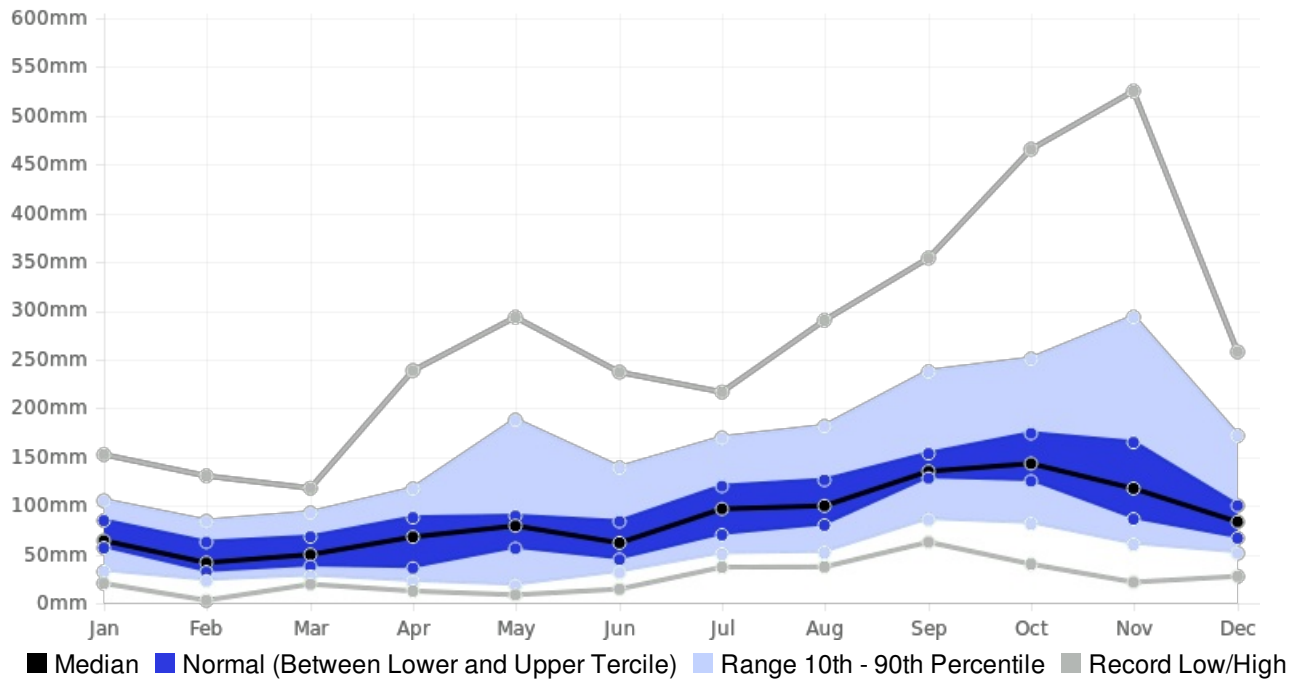
Generated By CAROGEN

Guadeloupe PORT-LOUIS Rainfall (AVERAGE:1200.3 mm) (Period: 1981 - 2010)

	Wettest Value	Wettest Date		Driest Value	Driest Date
Year On Record	1833.6 mm	2004		763.9 mm	1983
Month On Average	164.4 mm	October		49.5 mm	February
Month On Record	525.3 mm	November 1999		2.9 mm	February 2010
3-month period on record	915.1 mm	September to November 2008		58 mm	February to April 1983

PORT-LOUIS, Guadeloupe - Monthly Rainfall

(Location: 16.4°N, -61.5°W; Period of record: 1981-2010)



PORT-LOUIS, Guadeloupe - Seasonal Rainfall

(Location: 16.4°N, -61.5°W; Period of record: 1981-2010)

