



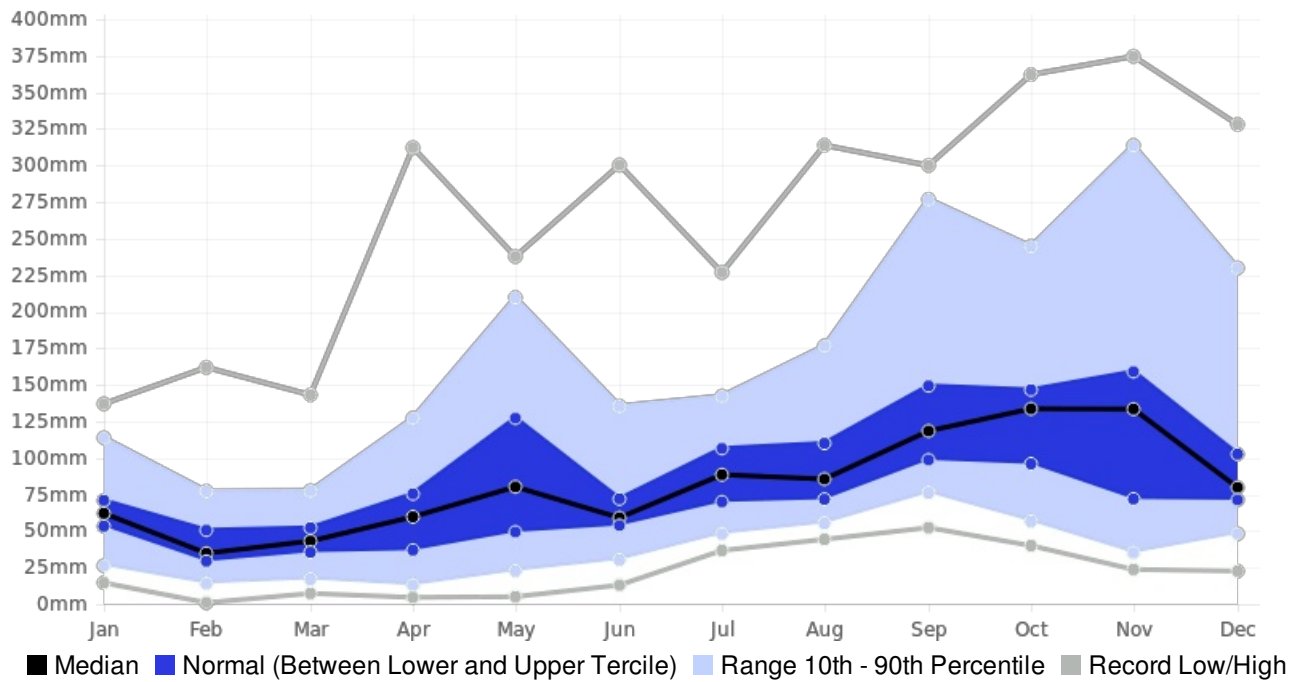
Generated By CAROGEN

Guadeloupe LA-DESIRADE Rainfall (AVERAGE:1159.9 mm) (Period: 1981 - 2010)

	Wettest Value	Wettest Date		Driest Value	Driest Date
Year On Record	1810.8 mm	2010		617.8 mm	1983
Month On Average	151.6 mm	September		43.8 mm	February
Month On Record	374.6 mm	November 1984		1 mm	February 1983
3-month period on record	789.5 mm	October to December 1998		32 mm	February to April 1983

LA-DESIRADE, Guadeloupe - Monthly Rainfall

(Location: 16.3°N, -61.1°W; Period of record: 1981-2010)



LA-DESIRADE, Guadeloupe - Seasonal Rainfall

(Location: 16.3°N, -61.1°W; Period of record: 1981-2010)

