



**USAID**  
FROM THE AMERICAN PEOPLE



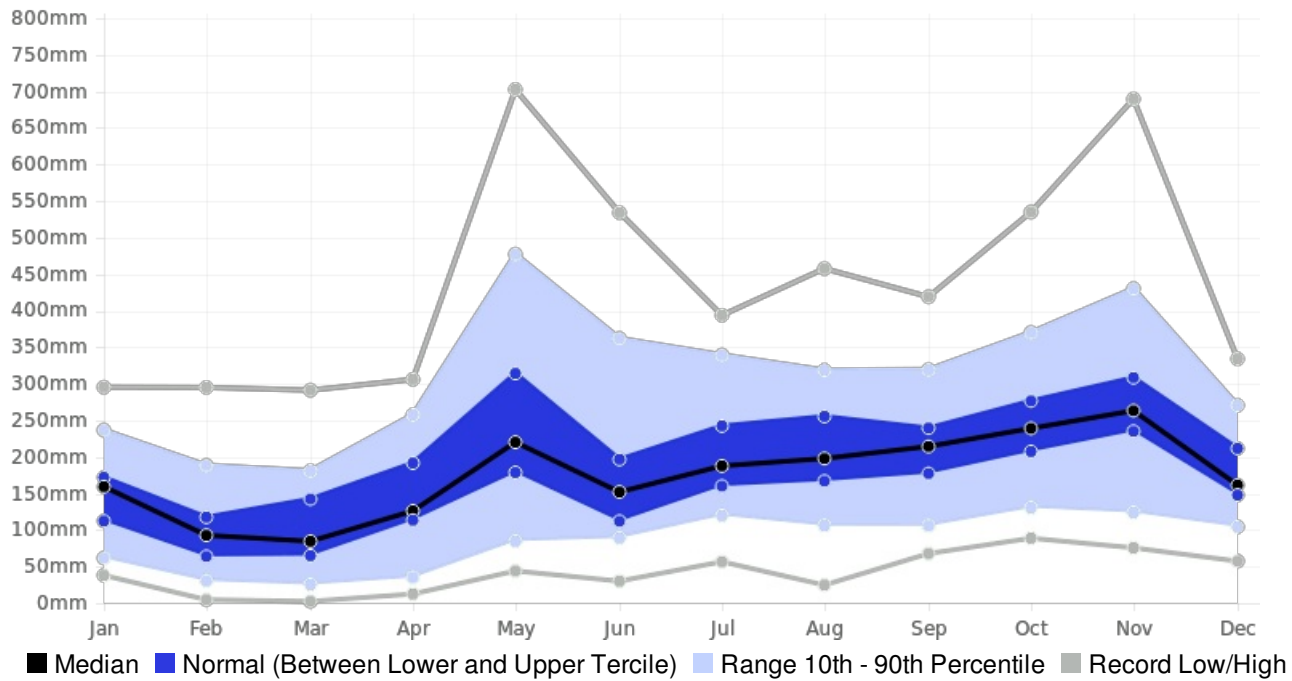
Generated By CAROGEN

## Dominican-Rep SBLMAR Rainfall (AVERAGE:2302.5 mm) (Period: 1981 - 2010)

	<b>Wettest Value</b>	<b>Wettest Date</b>		<b>Driest Value</b>	<b>Driest Date</b>
Year On Record	4108.4 mm	1996		1555.7 mm	2000
Month On Average	284.9 mm	November		103.7 mm	March
Month On Record	702.6 mm	May 1987		2.5 mm	March 2005
3-month period on record	1526.8 mm	September to November 1996		139.5 mm	January to March 2003

## SBLMAR, Dominican-Rep - Monthly Rainfall

(Location: 19.05°N, -69.417°W; Period of record: 1981-2010)



## SBLMAR, Dominican-Rep - Seasonal Rainfall

(Location: 19.05°N, -69.417°W; Period of record: 1981-2010)

