



**USAID**  
FROM THE AMERICAN PEOPLE



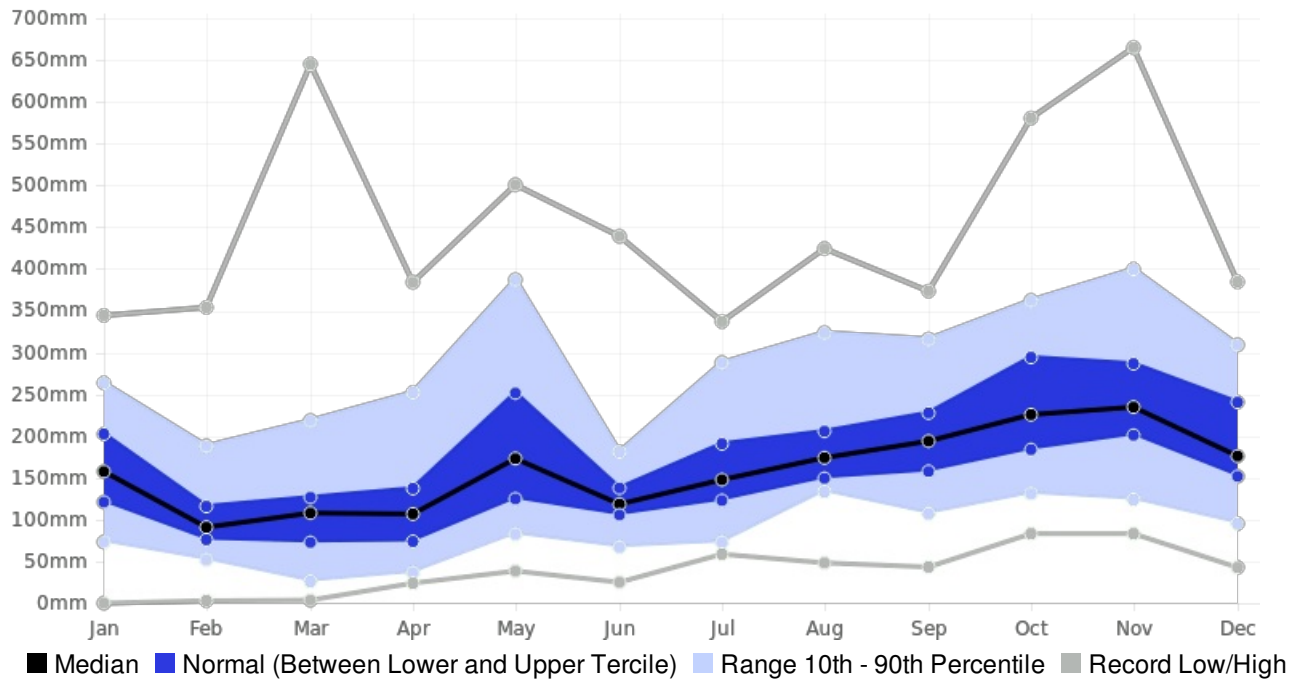
Generated By CAROGEN

## Dominican-Rep SAMANA Rainfall (AVERAGE:2136.9 mm) (Period: 1981 - 2010)

	<b>Wettest Value</b>	<b>Wettest Date</b>		<b>Driest Value</b>	<b>Driest Date</b>
Year On Record	3299.9 mm	1996		1316.5 mm	2000
Month On Average	258.4 mm	November		115.9 mm	February
Month On Record	665 mm	November 1996		0 mm	January 1981
3-month period on record	1356.7 mm	September to November 1996		131.9 mm	March to May 2000

## SAMANA, Dominican-Rep - Monthly Rainfall

(Location: 19.2°N, -69.333°W; Period of record: 1981-2010)



## SAMANA, Dominican-Rep - Seasonal Rainfall

(Location: 19.2°N, -69.333°W; Period of record: 1981-2010)

