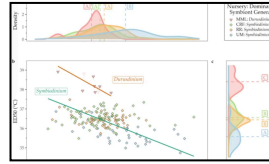


## Announcement

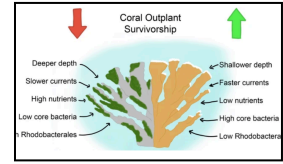
AS OF JUNE 17, SIGNIFICANT HEAT STRESS (ALERT LEVEL 1 AND ABOVE) IS NOT PREDICTED TO IMPACT THE MAJORITY OF THE CARIBBEAN REGION DURING JULY TO SEPTEMBER.



### REPORT CORAL BLEACHING OBSERVATIONS



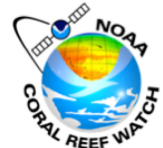
HEAT-TOLERANT ALGAL SYMBIONTS MAY PREVENT EXTIRPATION OF THE THREATENED ELKHORN CORAL, ACROPORA PALMATA, IN FLORIDA...



REEF SITE AND HABITAT INFLUENCE EFFECTIVENESS OF ACROPORA PALMATA RESTORATION AND ITS MICROBIOME IN THE FLORIDA KEYS

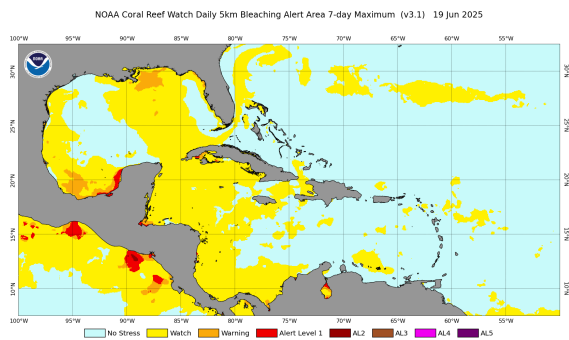


# CARIBBEAN CORAL REEF WATCH



## Notable Observations (As of June 19)

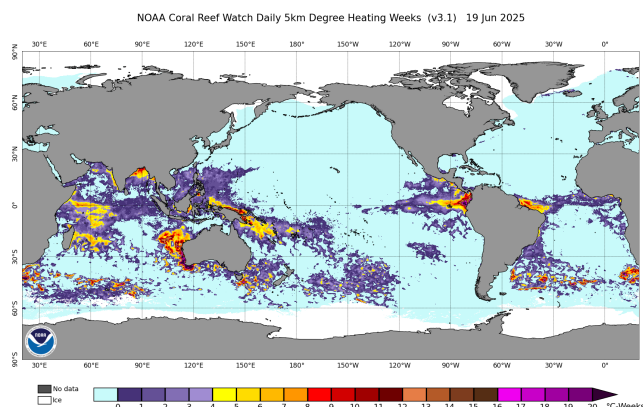
- ▶ The waters in the western Caribbean experiencing Bleaching Watch level conditions. Additional, Jamaica, Cayman Islands, northern Bahamas, and small areas throughout the basin including the Leeward Antilles also experiencing patches of Watch Alert Level conditions.
- ▶ Notably, part of the southern Mesoamerican Reef along the coast of Honduras and Belize experiencing Bleaching Warning level and Alert Level 1 heat stress.
- ▶ Heat stress is notably less throughout the region at this point, compared to the same period of 2024.



[Click here to track current conditions](#)

## Current Global Conditions (As of June 19)

- ▶ The most extreme accumulated heat stress (Degree Heating Weeks [DHW]  $\geq 16^{\circ}\text{C-weeks}$ ; Alert Level 4 or higher), is active at coral reef sites in the western and eastern equatorial Pacific Ocean, and western Australia. Alert Levels 1-5 heat stress are present at the following NOAA CRW Regional Virtual Stations: ~ 28% of Eastern Pacific, ~25% of Melanesia Stations, West Kalimantan ~ 30% of the Coral Triangle, Houtman Abrolhos (Australia), ~ 10% of the Middle East, and ~ 20% of S. Asia.



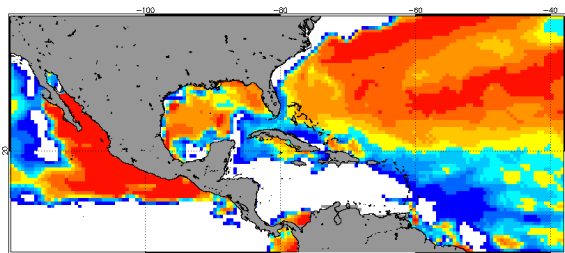
## Alert Level Guide

| Stress Level  | Interpretation  |
|---------------|---|
| No Stress     | No Bleaching  |
| Watch         |   |
| Warning       | Risk of Possible Bleaching  |
| Alert Level 1 | Risk of Reef-Wide Bleaching   |
| Alert Level 2 | Risk of Reef-Wide Bleaching with Mortality of Heat-Sensitive Corals |
| Alert Level 3 | Risk of Multi-Species Mortality                                     |
| Alert Level 4 | Risk of Severe, Multi-Species Mortality (> 50% of corals)           |
| Alert Level 5 | Risk of Near Complete Mortality (> 80% of corals)                   |

## Caribbean Outlook (June-September 2025)

- The 4-Month Probabilistic Outlook of June 17 predicts that heat stress will not reach Alert Level 1 in most of the Caribbean basin. The regions predicted, with relatively high probabilities, to reach/exceed Alert Level 1 are in the northern Bahamas, Turks and Caicos, southern Cuba, and northern coast of Hispaniola.

2025 Jun 17 NOAA Coral Bleaching Heat Stress Probabilities (Alert 1 & 2) for Jun-Sep  
Experimental, v5.0, CFSv2-based, 28 to 112 Ensemble Members

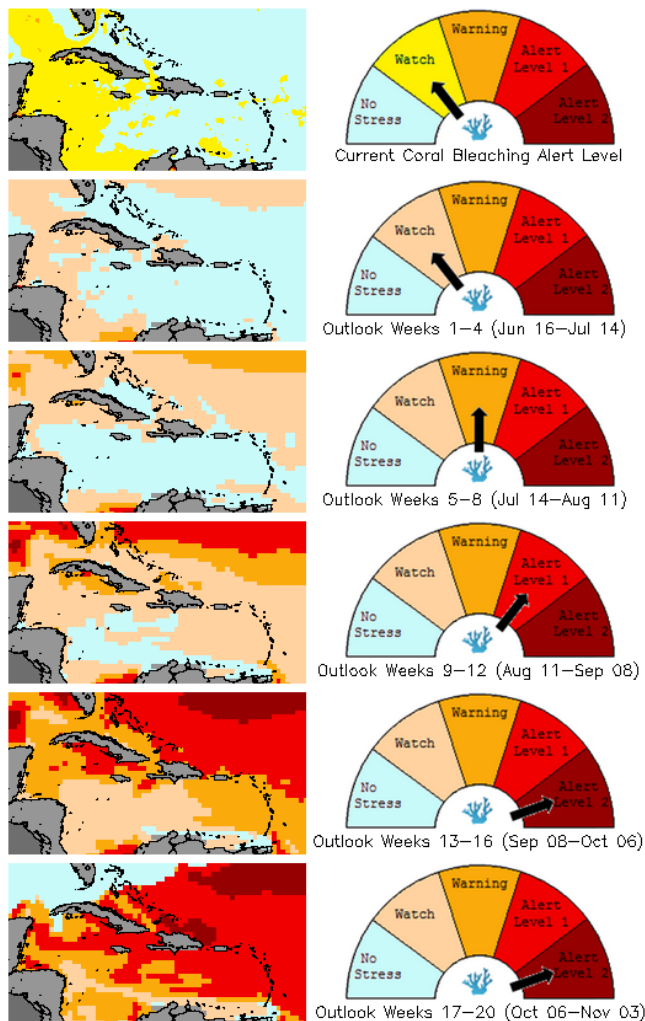


Probability percent  
 <10 10-20 20-30 30-40 40-50 50-60 60-70 70-80 80-90 90-99 100 %

[Click here to track the 4-month probabilistic bleaching outlook](#)

## Bleaching Alert Area and Outlook

Caribbean Satellite Bleaching Alert Area and Outlook  
2025-06-17

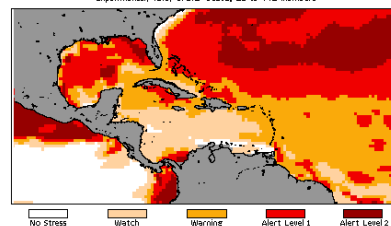


## Caribbean Bleaching Outlook

As of 17 June, 2025, NOAA CRW's 4-Month Coral Bleaching Outlook (60% probability) indicates that Bleaching Alert-level 1 conditions is forecasted to begin affecting the northern Bahamas in August, expanding to affect the Turks and Caicos in September, while spreading further south to Jamaica, the Cayman Islands, Hispaniola, and the Leeward and Windwards Islands.

[View all 5-km NOAA CRW Regional Virtual Stations](#)

2025 Jun 17 NOAA 80% Probability Bleaching Heat Stress for Jun-Sep 2025  
Experimental, v5.0, CFSv2-based, 28 to 112 Members



[4-month Coral Bleaching Outlook \(60% probability\)](#)

[4-month Coral Bleaching Outlook \(90% probability\)](#)

[Click here for more information about the NOAA Coral Reef Watch methodology](#)

For more information contact:

Adrian Trotman  
atrotman@cimh.edu.bb

Courtney Forde  
cforde@cimh.edu.bb

Shontelle Stoute  
sstoute@cimh.edu.bb