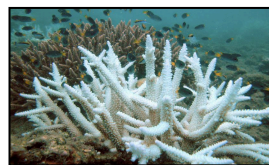


Announcement

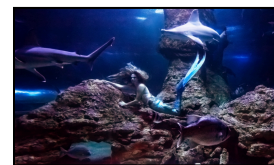
**BLEACHING ALERT
LEVEL 1 ISSUED FOR
THE CARIBBEAN IN 5-8
WEEKS. THERE ARE NO
REPORTS OF
BLEACHING AT THIS
TIME.**



**REPORT CORAL
BLEACHING
OBSERVATIONS**



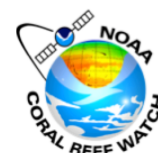
**WHY 'CHASING CORAL' IS
THE MOST IMPORTANT
FILM TO SEE RIGHT NOW!**



**MEET THE MERMAIDS
TRYING TO DEFEND THE
CORAL REEFS FROM
CLIMATE CHANGE**

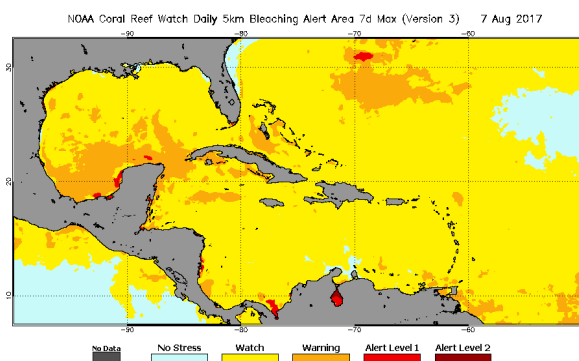


CARIBBEAN CORAL REEF WATCH



Notable Observations

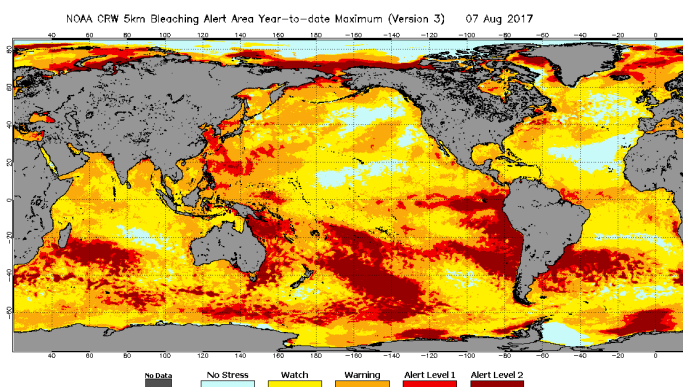
- ▶ Warmer SSTs observed throughout the Caribbean. Slight paling reported on what coast of Barbados.
- ▶ Bleaching watches issued across the Caribbean with warnings issued for Cuba, Bahamas and Trinidad. Alert level 1 in southern Gulf of Mexico and Venezuela.
- ▶ ENSO-neutral is favored (~50 to 55% chance) through the Northern Hemisphere Winter 2017-2018. [Read more.....](#)



[Click here to track current conditions](#)

Current Global Conditions

- ▶ All reefs in the Philippines are now under coral bleaching Alert Level 1 or 2 conditions. Alert Level 1 issued for Taiwan and N. Ryukyus.
- ▶ Alert Level 2 issued for Northern Mariana Islands.
- ▶ Alert Level 1 for Hong Kong and Hainan Island, China.



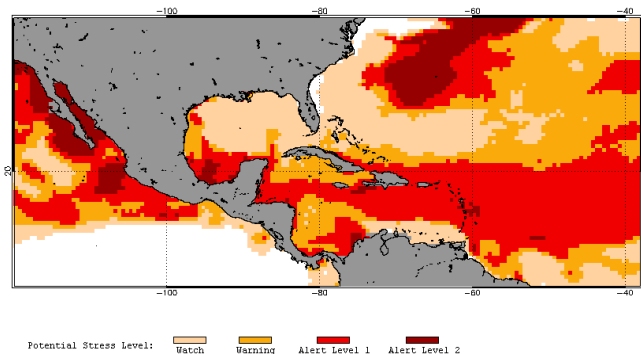
Alert Level Guide

Alert Level	Interpretation
No Stress	No Thermal Stress
Watch	Low-level thermal stress
Warning	Thermal stress is accumulating
Alert level 1	Bleaching expected
Alert level 2	Widespread bleaching and some mortality expected

Current Outlook (August–November 2017)

- 4-Month Outlook indicates that Bleaching Thermal Stress will be at Alert Level 1 in 5–8 weeks (Sep).

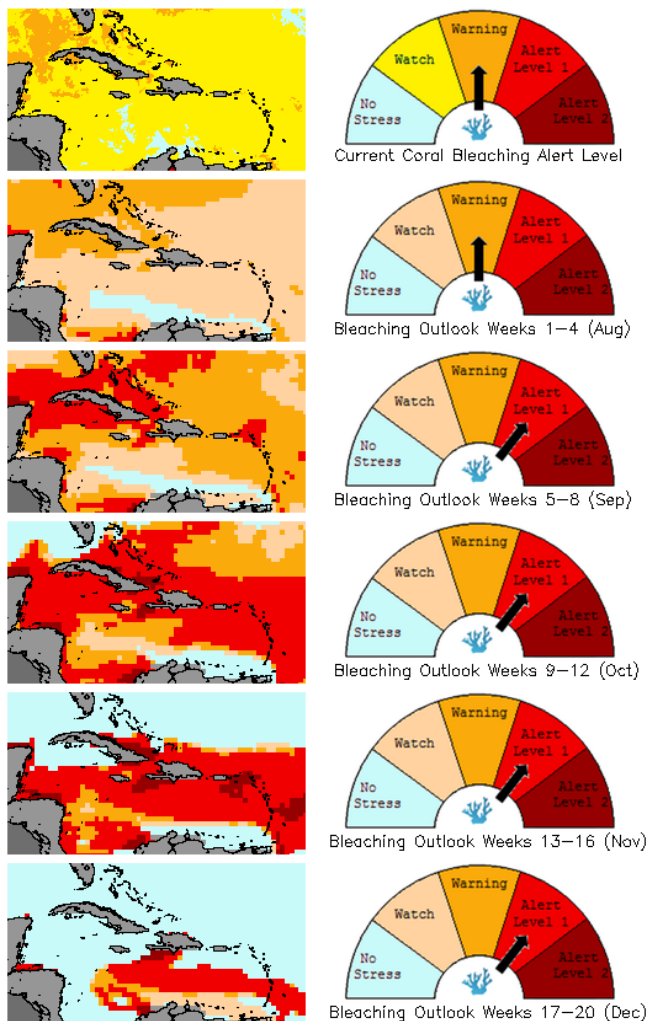
2017 Aug 8 NOAA 60% Probability Coral Bleaching Thermal Stress for Aug–Nov 2017
Experimental, v4.0, CFSv2-based, 28 to 112 Ensemble Members



[Click here to track the 4-month bleaching outlook](#)

Bleaching Alert Area and Outlook

Caribbean Satellite Bleaching Alert Area and Outlook
2017–07–31

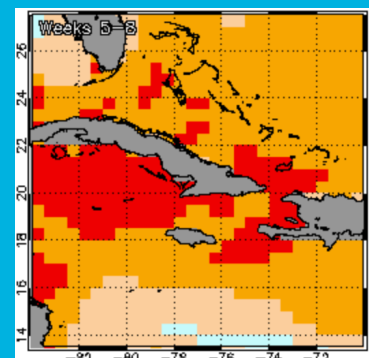


Caribbean Bleaching Outlook

A bleaching Alert Level 1 has been issued for the Caribbean in 5–8 weeks.

Thermal stress conditions are predicted to be at bleaching levels from September to December.

5-km Regional Virtual Stations



Alert level 1 issued for Cuba and Haiti in 5–8 Weeks (Sept)

[Click here for more information about the NOAA Coral Reef Watch methodology](#)

For more information contact:

Adrian Trotman
atrotman(at)cimh.edu.bb

Courtney Forde
cforde(at)cimh.edu.bb

Shontelle Stoute
sstoute(at)cimh.edu.bb